

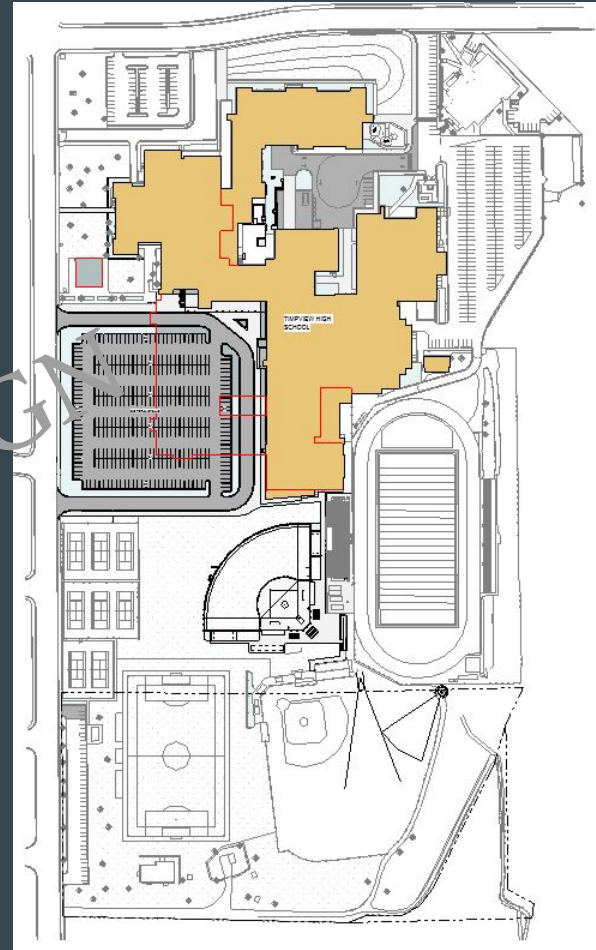
How did we get here?

- Signs of building settlement initiated investigation
- Investigations uncovered the existence of wet collapsible soils under the existing building which induced portions of the building to shift and settle
- Extensive coordination with architects, contractors, engineers, and the State Division of Risk to formulate a plan
- Plan to reduce risk by focusing on eliminating and controlling surface water and rebuilding portions of campus with the greatest signs of settlement



Phase 1 - Site Plan

- Existing building is represented by the red line
- Student parking will be relocated to the south west part of the campus
- Existing faculty/event parking on the north-west, and east to remain
- Existing bus drop to remain
- New softball field, soccer practice field, football home bleachers, and 2 tennis courts

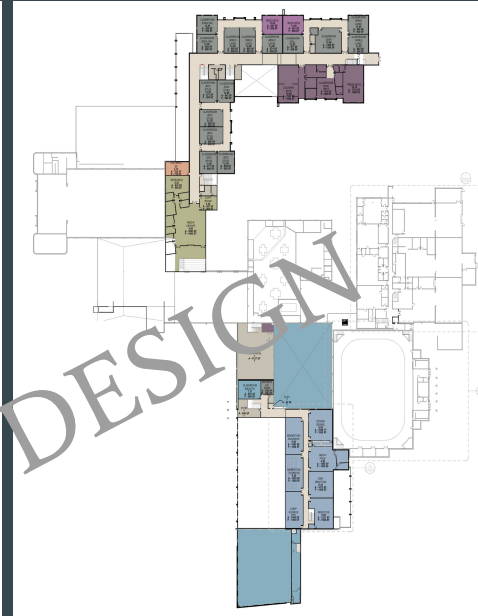


Phase 1 - Floor Plans

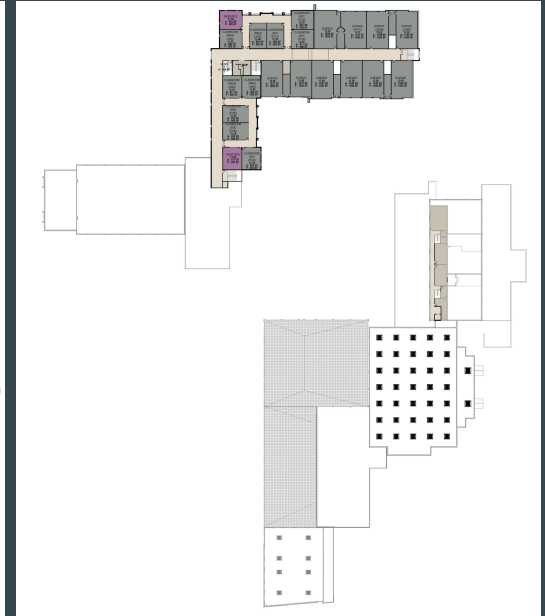
- Current space program evolved from the 2019 design efforts and design meetings with admin, staff, departments, parents, and students



Level 01



Level 02



Level 03

Phase 1 - Exterior



Phase 1 - Schedule

