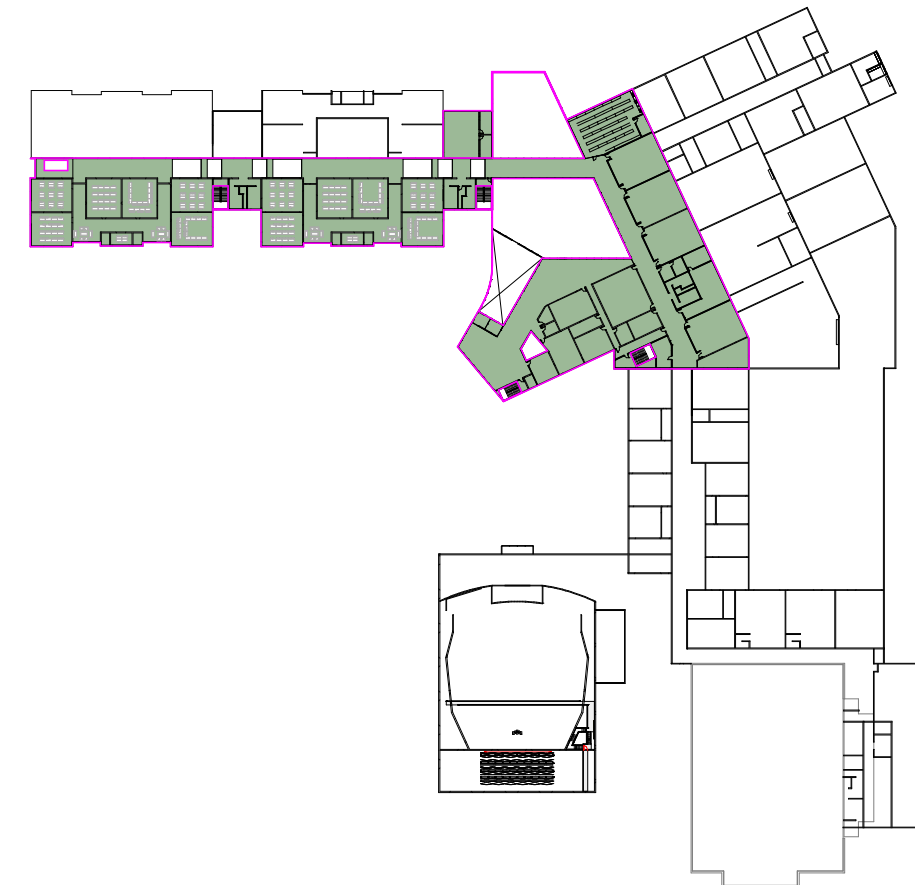
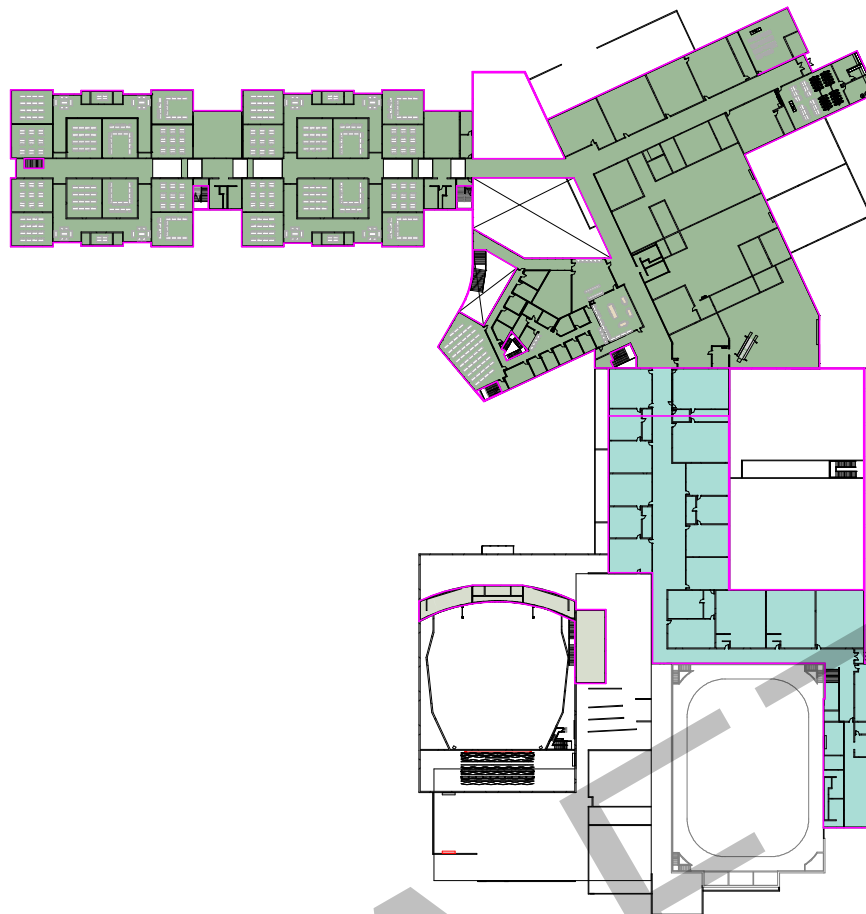


Project Phases

- Phase 01
- Phase 02
- Phase 03



1 LEVEL 01 - PHASES

SCALE: 1" = 160'-0"

2 LEVEL 02 - PHASES

SCALE: 1" = 160'-0"

3 LEVEL 03 - PHASES

SCALE: 1" = 160'-0"

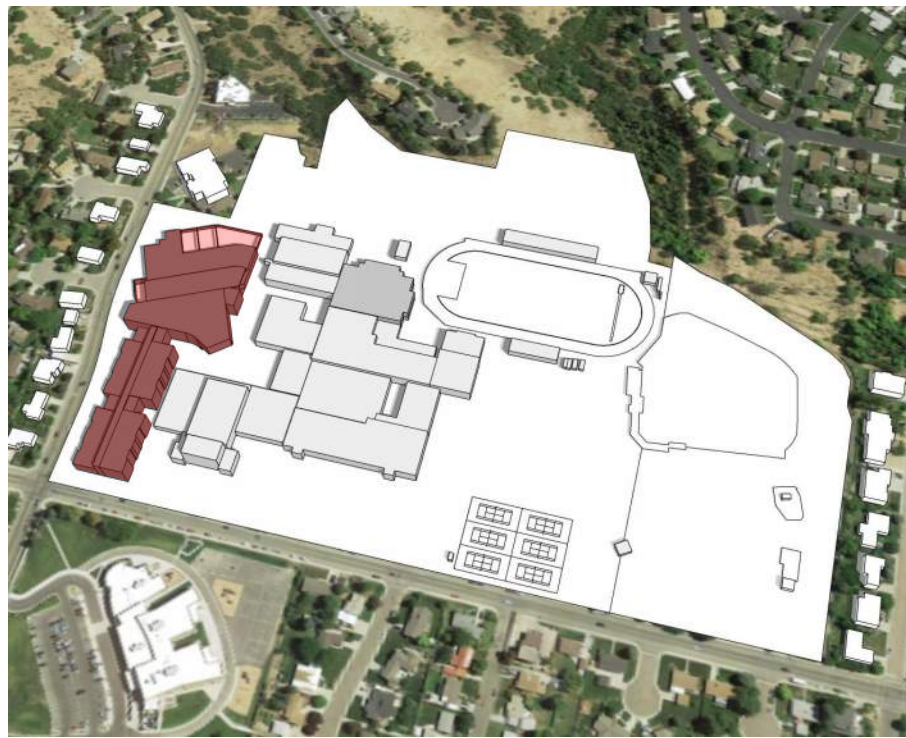
Area Schedule (Phases)		
Name	Area	Level
Phase 01		
PHASE 01 - LEVEL 01	87131.61 SF	LEVEL 1.5
PHASE 01 - LEVEL 02	103712.76 SF	LEVEL 2.5
PHASE 01 - LEVEL 03	54993.15 SF	LEVEL 3.5
PHASE 01 - SITE BUILDINGS	5652.89 SF	LEVEL 1.5
	251490.41 SF	
Phase 02		
PHASE 02 - LEVEL 01	58182.67 SF	LEVEL 1.5
PHASE 02 - LEVEL 02	39914.88 SF	LEVEL 2.5
	98097.55 SF	
Phase 03		
PHASE 03 - LEVEL 01	51627.79 SF	LEVEL 1.5
PHASE 03 - LEVEL 02	3579.33 SF	LEVEL 2.5
	55207.12 SF	
	404795.08 SF	

Timpview High School Phasing
Westland Construction
9/19/2019

	2020												2021												2022												2023												2024											
	J	F	M	A	M	J	J	A	S	O	N	D	J	F	M	A	M	J	J	A	S	O	N	D	J	F	M	A	M	J	J	A	S	O	N	D	J	F	M	A	M	J	J	A	S	O	N	D	J	F	M	A	M	J	J	A	S	O	N	D
Phase I																																																												
IA Admin/CTE/Kitchen/Commons/Classrooms																																																												
Phase I Util Relocation, Piers, Earthwork																																																												
Demo Existing Classrooms	X																								Demo																																			
Phase II																																																												
Athletics																																					Demo																							
Demo Existing Athletics	X																																				Demo																							
Thunderdome Upgrades																																																												
Phase I, II Sitework, Asphalt, Landscape																																																												
Phase III																																																												
Auditorium																																																												
Demo Existing Auditorium	X																																				Demo																							
Phase III Sitework, Asphalt, Landscape																																																												

Options being considered: 1) Portable for various functions and rooms during phasing, 2) Temporary offsite classrooms for various programs.



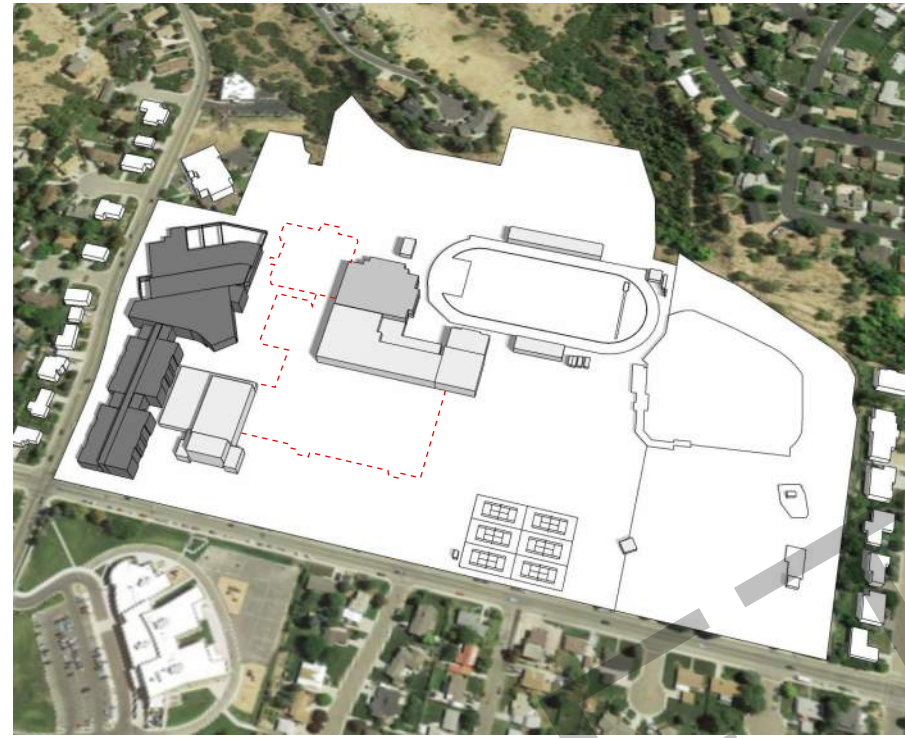


PHASE 1 - NEW CONSTRUCTION

APRIL 2020 - JUNE 2022

CONSTRUCT:

- Classrooms, CTE, FACS, Visual Arts, Commons, Kitchen, Serving, Media Center, Admin, Counseling, & Special Education

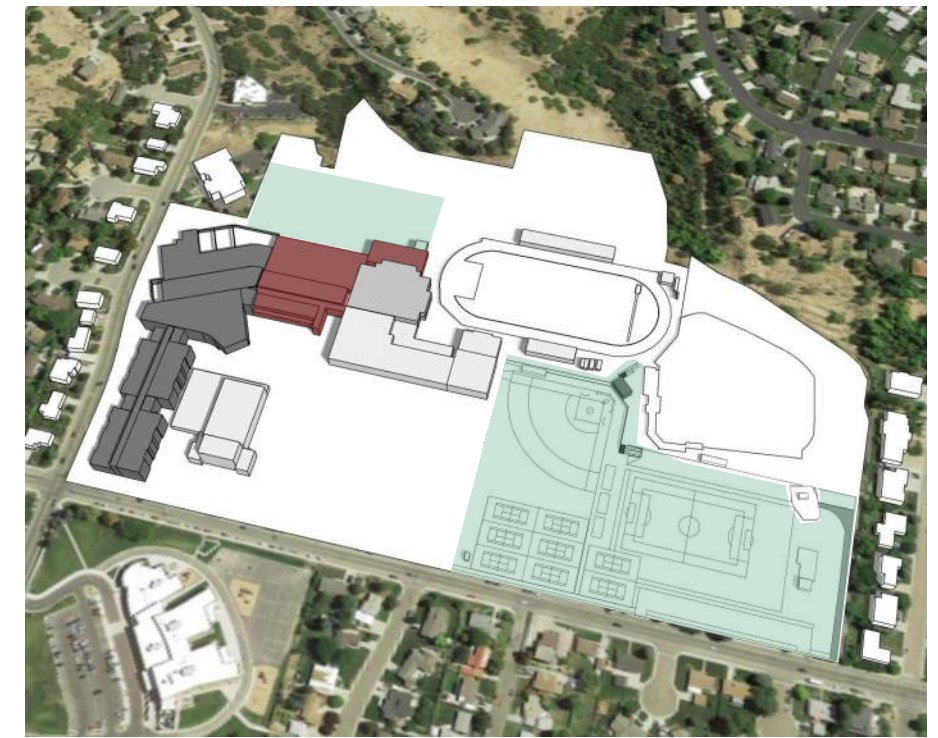


PHASE 1 - DEMOLITION

JULY 2022 - AUGUST 2022

DEMOLISH EXISTING:

- CTE, Commons, Dining, Kitchen, Media Center, Classroom wings, Admin & Counseling

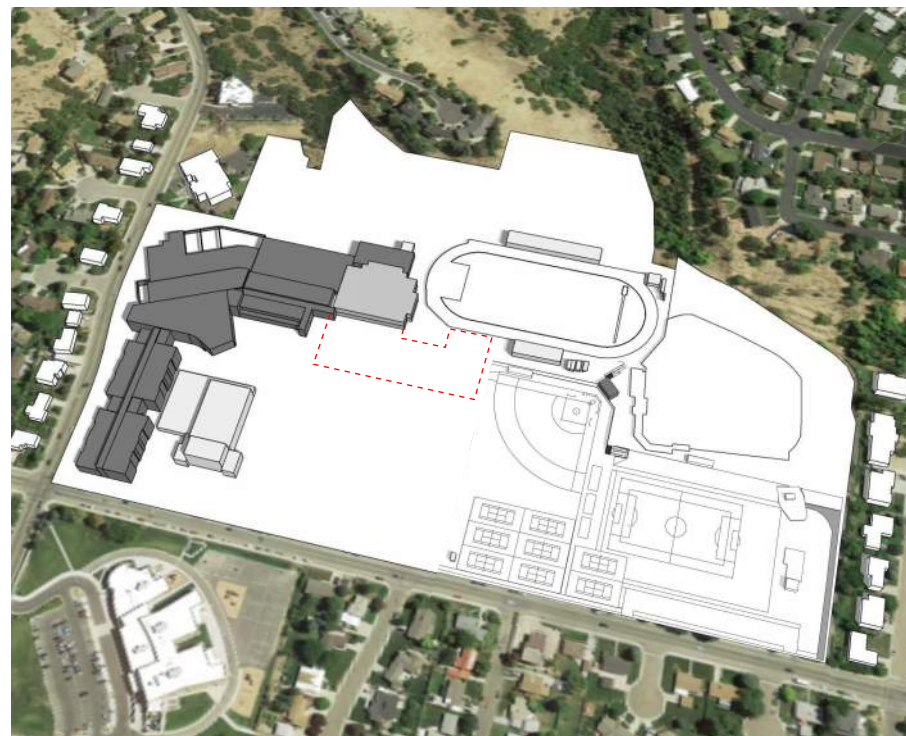


PHASE 2 - NEW CONSTRUCTION

JULY 2022 - JULY 2023

CONSTRUCT:

- New Athletics Facilities (Auxiliary gyms, lockers, weights, and wrestling)
- Athletic Site Amenities (Tennis courts, softball, concessions, park pavilion, south field, east practice field)

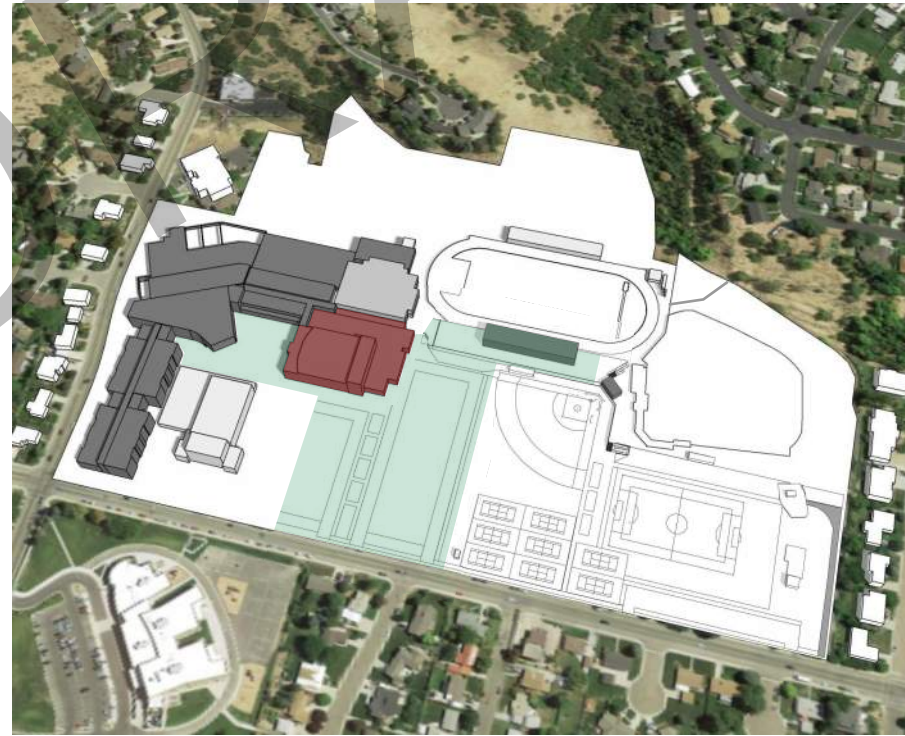


PHASE 2 - DEMOLITION

JULY 2023 - AUGUST 2023

DEMOLISH EXISTING:

- Athletics (North & South Gyms, Lockers, Dance, Weights)

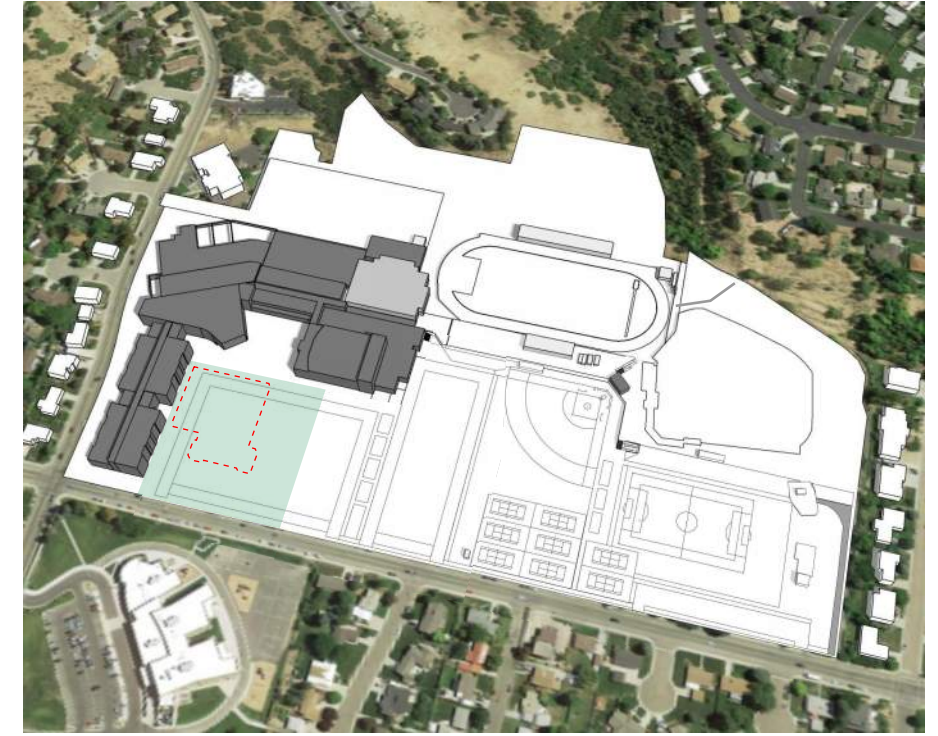


PHASE 3 - NEW CONSTRUCTION

AUGUST 2023 - SEPTEMBER 2024

CONSTRUCT:

- New Performing Arts, Auditorium, & South Entrance
- Partial Student Parking, Football Bleachers & Team Rooms



PHASE 3 - DEMOLITION & SITE

OCTOBER 2024 - DECEMBER 2024

DEMOLISH EXISTING:

- Performing Arts

CONSTRUCT:

- Remaining student parking and landscaping