

VCBO
ARCHITECTURE

524 SOUTH 600 EAST
SALT LAKE CITY, UT 84102
801.575.8800 | VCBO.COM



architect	OWNER
Bresnna Bonsavage	Stephen Canfield
VCSO ARCHITECTURE	PROVO CITY SCHOOL DISTRICT
524 South 600 East	280 West 940 North
Salt Lake City, UT 84102	Provo, UT 84604
bbonsavage@vcsob.com	stephen@provo.edu
801.575.8800	801-616-1632
electrical engineer	door hardware consultant
Scott Kingery	George Stromquist
ENVISION ENGINEERING	ALLEGIION
240 EAST MORRIS AVE SUITE 202	240 E. Morris Avenue, Suite 202
SALT LAKE CITY, UT 84115	Salt Lake City, UT 84115
skingery@envisioneng.com	george.stromquist@allegiion.com
801.534.1130	801-389-7905

The diagram illustrates the components of a door symbol. It includes a rectangular box for 'RM NAME' containing 'XXX', a circular symbol for 'ROOM NAME & NUMBER SYMBOL' containing '21', and a rectangular box for 'DOOR NUMBER' containing 'A-100A'. Callouts point to 'FRAME MATERIAL' (H-M), 'FRAME TYPE' (21), 'DOOR TYPE' (A-100A), and 'HARDWARE GROUP' (H-X). A 'NOTE' section shows a box with 'X' and 'AX-XX' below it. A 'DETAIL REFERENCE MARK' is indicated by a line pointing to the symbol.

GOVERNING BUILDING CODES:
IBC 2015 TO INCLUDE APPENDIX J, ANSI 117.1-2009, IMC 2015, IPC 2015, IECC 2015, NEC 2014, IFGC 2015, NFPA 101 LIFE SAFETY 2015

TENANT IMPROVEMENT TO EXISTING BUILDING, NO STRUCTURAL CHANGES ARE BEING MADE

AUTOMATIC SPRINKLER SYSTEM, 903.2.3 - YES

OCCUPANCY TYPE - (CH.3)
• E @EDUCATION

EXITING REQUIREMENTS UNCHANGED FROM ORIGINAL BUILDING.

GENERAL		ARCHITECTURAL (CONT.)	
G101	GENERAL INFORMATION	A201	DOOR HARDWARE
ARCHITECTURAL		ELECTRICAL	
A101	FLOOR PLAN & DETAILS	EG101	SYMBOLS, SCHEDULES & NOTES

IT IS THE CONTRACTORS RESPONSIBILITY TO REVIEW AND COORDINATE THE WORK OF ALL SUB-CONTRACTORS, TRADES AND SUPPLIERS, TO OBTAIN ALL NECESSARY PERMITS AND CONTRACT DOCUMENTS BEFORE COMMENCING CONSTRUCTION, AND TO ASSURE THAT ALL PARTIES ARE AWARE OF ALL REQUIREMENTS, REGARDLESS OF WHERE THE REQUIREMENTS OCCUR IN THE CONTRACT DOCUMENTS, WHICH MIGHT AFFECT THE WORK OF THAT PARTY.

2. AS PART OF THE CONTRACTORS RESPONSIBILITY TO COORDINATE THE WORK OF ALL SUB-CONTRACTORS, TRADES AND SUPPLIERS, THE CONTRACTOR SHALL ENDEAVOR TO IDENTIFY AND NOTIFY THE ARCHITECT OF ANY CONFLICTS BETWEEN THE WORK OF ANY SUB-CONTRACTOR, TRADE OR SUPPLIER AND THE WORK OF THE ARCHITECT, AND ADEQUATE TIME FOR THE CONFLICT TO BE RESOLVED WITHOUT DELAYING THE WORK. ALL DEVIATIONS FROM THE ARCHITECTS DESIGN ADVISORY BY THE CONTRACTOR SHALL BE NOTED ON THE ARCHITECTURAL DRAWINGS.

3. THE ARCHITECTURAL DRAWINGS ESTABLISH AND COORDINATE THE FINISHED APPEARANCE AND EXACT LOCATION OF ALL EXPOSED ELEMENTS OF THE WORK OF ALL THE TRADES, INCLUDING THAT WORK WHICH IS ILLUSTRATED PRIMARILY ON DRAWINGS OF OTHER DISCIPLINES. QUANTITIES OF MATERIALS AND FINISHES OF MATERIALS OF OTHER DISCIPLINES BUT LOCATIONS SHOWN ON OTHER DRAWINGS ARE SCHEMATIC. UNLESS OTHERWISE NOTED ON THE ARCHITECTURAL DRAWINGS, THE ARCHITECTURAL DRAWINGS SHALL PRECEDE FOR THE FINISHED APPEARANCE AND EXACT LOCATION OF ALL PARTS OF THE WORK.

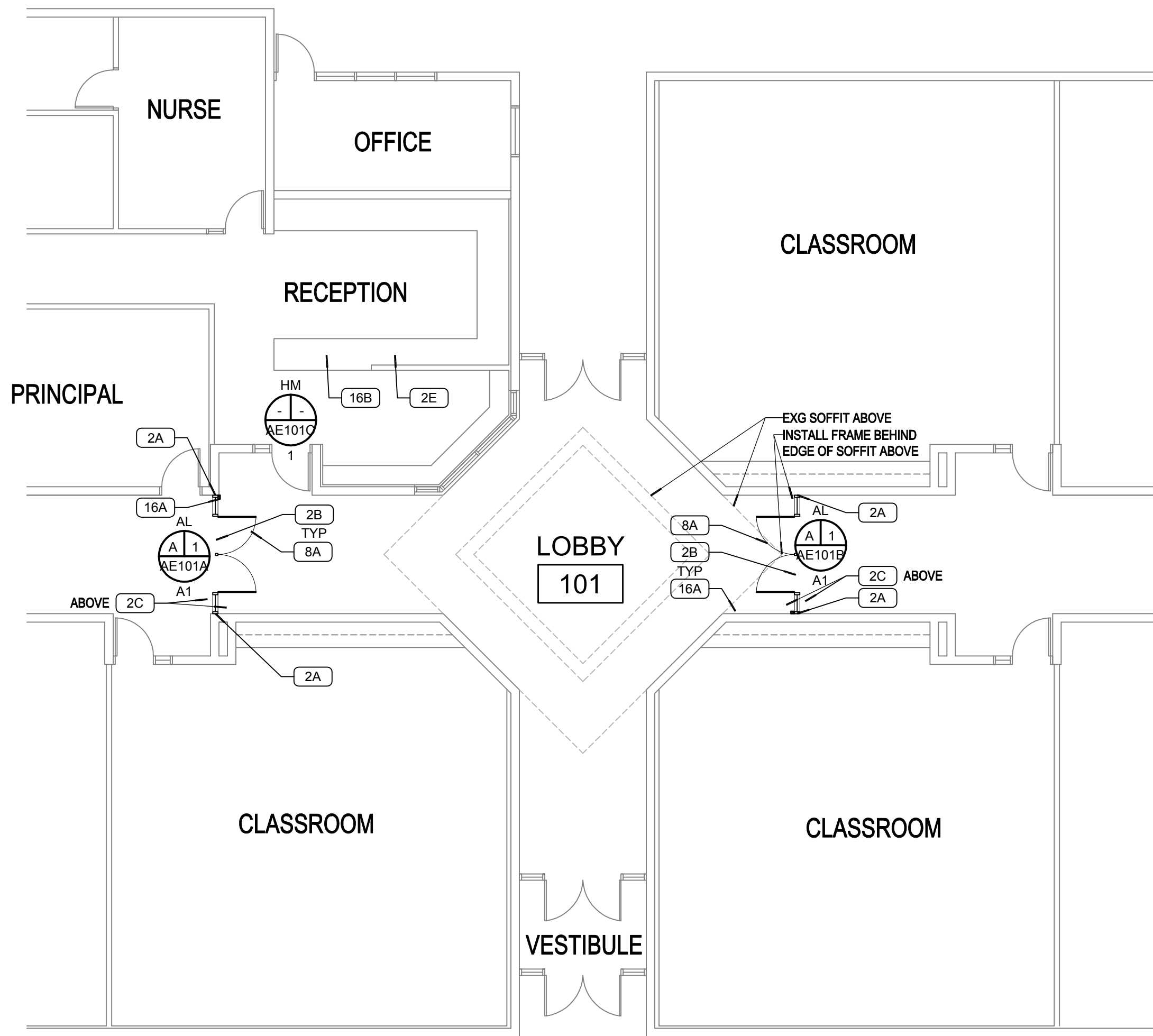
4. EXCEPT WHERE DIRECTED TO PLACE ITEMS OF WORK AT THE APPROXIMATE LOCATION SHOWN, DO NOT SCALE DRAWINGS FOR DIMENSIONAL INFORMATION. ALL ELEMENTS OF THE WORK SHOWN ARE NOT TO SCALE UNLESS SPECIFICALLY NOTED TO THE CONTRARY. SHOWN OR MAY BE DERIVED FROM THOSE SHOWN ON THE FLOOR PLANS, DETAIL PLANS, ELEVATIONS, SECTIONS, DETAILS, SCHEDULES AND SPECIFICATIONS. IF DIMENSIONS ARE NOT PRESENT, THE ARCHITECT IS TO BE INFORMED SO THAT A CLARIFICATION CAN BE ISSUED.

1. THIS SHEET CONTAINS A LIST OF DRAWINGS WHICH COMPRISE A FULL SET OF DRAWINGS FOR THIS PROJECT. ANY CONTRACTOR, SUBCONTRACTOR, VENDOR OR ANY OTHER PERSON OR ORGANIZATION PARTICIPATING IN THIS PROJECT SHALL BE RESPONSIBLE FOR THE INFORMATION CONTAINED IN ALL SHEETS OF DRAWINGS AND SPECIFICATIONS. IF ANY PERSON, PARTY OR ENTITY SELCTS TO SUBMIT BIDS FOR ANY PORTION, OR ALL, OF THIS PROJECT, THAT PERSON, PARTY OR ENTITY SHALL BE RESPONSIBLE FOR THE INFORMATION CONTAINED IN THESE DRAWINGS AND SPECIFICATIONS, INCLUDING, BUT NOT LIMITED TO, ANY SUBSEQUENT ADDENDUMS OR CLARIFICATIONS THAT MAY BE ISSUED.

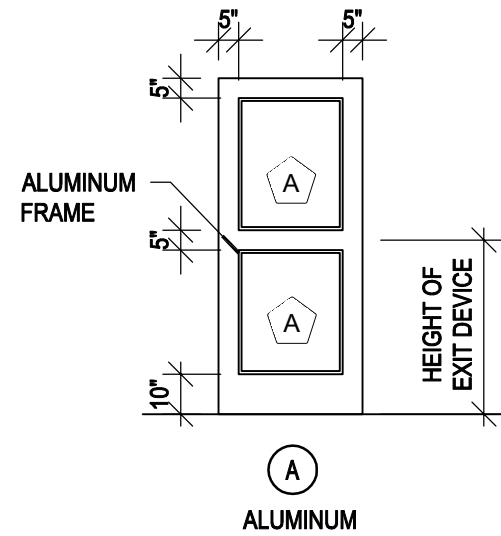
2. THESE DOCUMENTS SHOW THE DESIGN INTENT. IT IS THE CONTRACTORS RESPONSIBILITY TO PROVIDE EVERYTHING SHOWN ON THE DRAWINGS OR SPECIFICATIONS, REGARDLESS OF WHERE IT IS SHOWN ON THE DRAWINGS OR IN THE SPECIFICATIONS. FOR THE PURPOSES OF THIS CONTRACT, THE DRAWINGS AND SPECIFICATIONS SHALL BE PROVIDED BY DIVISION 05 OR WITH THE MILLWORK AT THE CONTRACTORS DISCRETION, BUT IT SHALL BE PROVIDED AS PART OF THE CONTRACT.

A.F.F.	ABOVE FINISH FLOOR	F.A.	FIRE ALARM	R.O.	ROUGH OPENING
A.S.	AIR SPACE	F.F.	FINISHED	RM	ROOM
ASPH.	ASPHALT	F.H.	FIRE HYDRANT	REIN.F.	REINFORCING
AT	AND	F.V.	FIELD VIEW	RECES.	RECESSED
@	AT	G.W.B.	GYPSSUM WALLBOARD	R.W.	REINFORCING WALL
ARCH.	ALUMINUM	GYP	GYPSSUM	S.	SCUPPER
B.D.G.	ARCHITECTURAL	G.A.	GUAGE	S.B.U.	STRUCTURAL BRICK UNIT
BLDG.	BUILDING	GALV.	GALVANIZED	SF	SQUARE FOOT
BTM.	BOTTOM	G.I.	GALVANIZED IRON	STOR.	STORAGE
BD.	BOARD	H.	HOLLOW METAL	SIM.	SIMILAR
C.S.	CONCRETE CURB	H.C.	HANDICAP	SUSP.	SUSPENDED
CTJ.	CONTRACTION JUNT	H.P.	HIGH POINT	SYS.	SYSTEM
CL	CONCRETE LANE	H.T.	HEIGHT	SPECS.	SPECIFICATIONS
C.M.U.	CONCRETE MASONRY UNIT	HORIZ.	HORIZONTAL	STGC.	STORAGE
CONS.	COMPANY	H.W.	HARDWOOD	STRUCT.	STRUCTURAL
CORR.	CORRIDOR	INSUL.	INSULATION	ST	STEEL
COL.	COLUMN	I.D.	INSIDE DIAMETER	SCHD.	SCHEDULE
COMPT.	COMPUTER	K.O.	KNOCK OUT	S.S.	STAINLESS STEEL
CONT.	CONTINUOUS	KW	KILOWATTS	S.W.	SOFT WOOD
CLG.	CEILING	LBS	POUNDS	SERV.	SERVICE
CLOSURE STRIP	CLOSURE STRIP	MECH.	MECHANICAL	TYPE	TYPICAL
C.S.	CLOSET	MEZZ.	MEZZANINE	TRANS.	TRANSFORMER
CLT	CERAMIC TILE	MFR/MFRMR	MANUFACTURER	T & B	TOP AND BOTTOM
CLR	CLEAR	MGR	MANAGER	T.O.	TOP OF
C.O.	CLEAN OUT	M.T.	MEN'S TOILET		TOILET
C.O.T.G.	CLEAN OUT TO GRADE	MTL	METAL	U.O./U.N.O.	UNLESS OTHERWISE NOTED
CR	CLEAR IRON	MAX.	MAXIMUM	UR	UNREAL
DEPT	DEPARTMENT	MIN.	MINIMUM	VAR.	VARIABLE
DIA.	DIAMETER	M.O.	MASONRY OPENING	VEST.	VESTIBULE
D.F.	DRINKING FOUNTAIN	M.H.	MANHOLE	VERT.	VERTICAL
DM	DOWN	MACH.	MACHINERY	W.C.	WATER CLOSET
DISP.	DISPENSER	M.C.C.	MOTOR CONTROL CENTER	W.H.	WATER HEATER
DIM.	DIMENSION	MISC.	MISCELLANEOUS	W.T.	WATER TOILET
DTL./DET.	DETAIL	N.	NORTH	WOOD	WOOD
DWG./DRWG.	DRAWING	NO.	NUMBER	WISC.	WAINSCOT
EA	EACH	N.I.C.	NOT IN CONTRACT	W.F.	WELDED WIRE FABRIC
ELEV.	ELEVATION	NOM.	NOMINAL		
ELEV.(E)	ELEVATION	N.T.S.	NOT TO SCALE		
ELECT.	EXISTING	OPENING	OPENING		
EQUIP.	ELECTRICAL EQUIPMENT	O.C.	ON CENTER		
E.E.S.	EMERGENCY EYEWASH AND SHOWER	O.H.	OVERHEAD		
EXP.	EXPANSION JOINT	O.D.	OUTSIDE DIAMETER		
EIV	EXTERIOR INSULATION SYSTEM	PERM.	PERIMETER		
EVAP.	EVAPORATIVE	P.	PLATE		
EXP.	EXPANSION	PNTH	PENTHOUSE		
F.G.	FINISH GRADE	PTN.	PARTITION		
F.D.	FLOOR DRAIN	P.W.	PLYWOOD		
FND/FNDTN.	FOUNDATION	P.O.C.	POINT OF CONNECTION		
F.E.	FIRE EXTINGUISHER	P.C.	PORTLAND CEMENT		
FTG.	FLOOR	PNL	PANEL		
FLR.	FLOOR	P.F.H.	PERIMETER FELT JOINT		
		Q.T.	QUARRY TILE		
		R.D.	ROOF DRAIN		

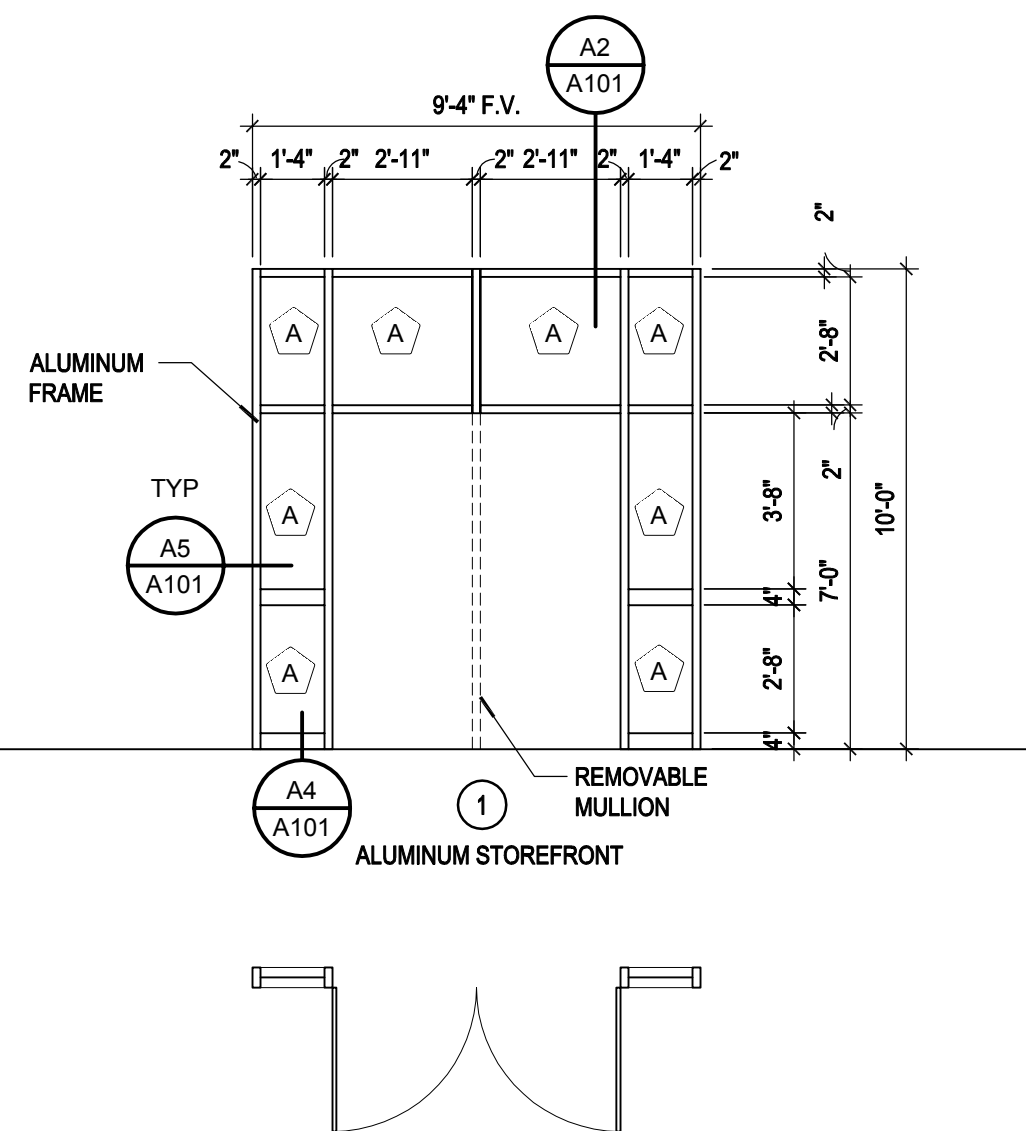
CONSTRUCTION DOCUMENTS
2018-08-13



C2 ANNOTATED FLOOR PLAN
SCALE: 1/8" = 1'-0"



E3 ALUMINUM DOOR
SCALE: 1/4" = 1'-0"



E4 ALUMINUM STOREFRONT FRAME
SCALE: 1/4" = 1'-0"

NOTES

- 1) SEE FRAME TYPE FOR WIDTH & HEIGHT, ALL DOORS ARE 1 3/4" THICK
- 2) ALL DOORS 3'-0" OR GREATER REQUIRE FOUR HINGES TYP.
- 3) FIELD VERIFY LENGTH OF ALL ARCS PRIOR TYP. FENESTRATION.
- 4) ALUMINUM STOREFRONT BASIS OF DESIGN:
 - FRAMES: KAWNEER 400 (1-3/4 X 4 INCH FRAME)
 - DOORS: KAWNEER STANDARD 500 ENTRANCE DOORS

GLAZING TYPES

A 1/4" TEMPERED GLASS

SYMBOL LEGEND

ROOM NAME ##	ROOM NAME ROOM NUMBER
FRAME MATERIAL HM - HOLLOW METAL AL - ALUMINUM	DOOR SYMBOL
DOOR TYPE 100A - FRAME TYPE HW (ALT X) - HARDWARE ALTERNATE	

GENERAL NOTES

1. THE CONTRACTOR MUST FIELD VERIFY ALL DIMENSIONS AND CONDITIONS INCLUDING EXISTING UTILITIES PRIOR TO BIDDING AS THE LOCATIONS SHOWN IN THE DOCUMENTS ARE APPROXIMATED. ALL VARIANCES NOT SHOWN IN THE DRAWINGS SHALL BE BROUGHT TO THE ATTENTION OF THE ARCHITECT PRIOR TO BID.
2. CONTRACTOR TO COORDINATE WITH ELECTRICAL PLANS FOR LOCATIONS OF ALL EXISTING AND NEW EQUIPMENT, SYSTEMS, AND DEVICES.
3. AS SOME DEMOLITION WORK WILL BE SPECIFIC TO DIVISION 22, 23, 28, THE CONTRACTOR SHALL CROSS REFERENCE WITH ELECTRICAL PLANS FOR ADDITIONAL DEMOLITION WHICH IS REQUIRED, BUT NOT REFLECTED ON ARCHITECTURAL DRAWINGS. RELOCATE, REWIRE, AND/OR RECONNECT EXISTING ELECTRICAL AND MECHANICAL DEVICES OR EQUIPMENT THAT FOR ANY REASON OBSTRUCTS CONSTRUCTION.
4. CONTRACTOR SHALL TAKE ALL PRECAUTIONS NECESSARY TO PROTECT THE EXISTING STRUCTURE, FINISHES, AND SITE ELEMENTS.
5. ALL EXISTING INTERIOR FINISHES, MATERIALS, STRUCTURE, SYSTEMS, LANDSCAPING, AND SITE FEATURES, ETC. THAT ARE DAMAGED DURING THE PROCESS OF CONSTRUCTION SHALL BE RESTORED TO THEIR ORIGINAL CONDITION OR REPLACED TO MATCH AT THE CONTRACTORS EXPENSE.
6. CONTRACTOR IS TO COORDINATE ALL DEMOLITION AND CONSTRUCTION ACTIVITIES WITH THE ONGOING OPERATIONS OF ADJACENT BUILDING TENANTS. CONTRACTOR TO SCHEDULE WORK AND COORDINATE ANY UTILITY SHUT OFFS OR INTERRUPTIONS WITH BUILDING OWNER 2 WEEKS PRIOR TO OCCURRENCE.
7. IN AREAS WHERE CIRCUIT CONTINUITY IS INTERRUPTED, BUT MUST BE MAINTAINED, MAKE ALL NECESSARY MODIFICATIONS TO THE CIRCUITS IN ORDER TO MAINTAIN CIRCUIT INTEGRITY.
8. CONTRACTOR TO USE DUST CONTROL AND SOUND CONTROL IN ALL DEMOLITION AND CONSTRUCTION.
9. ALL DOORS/FRAMES RECEIVING NEW HARDWARE TO BE PATCHED, REPAIRED, AND REFINISHED AS NEEDED.

KEYED NOTES

DIVISION 2 - EXISTING CONDITIONS / DEMOLITION

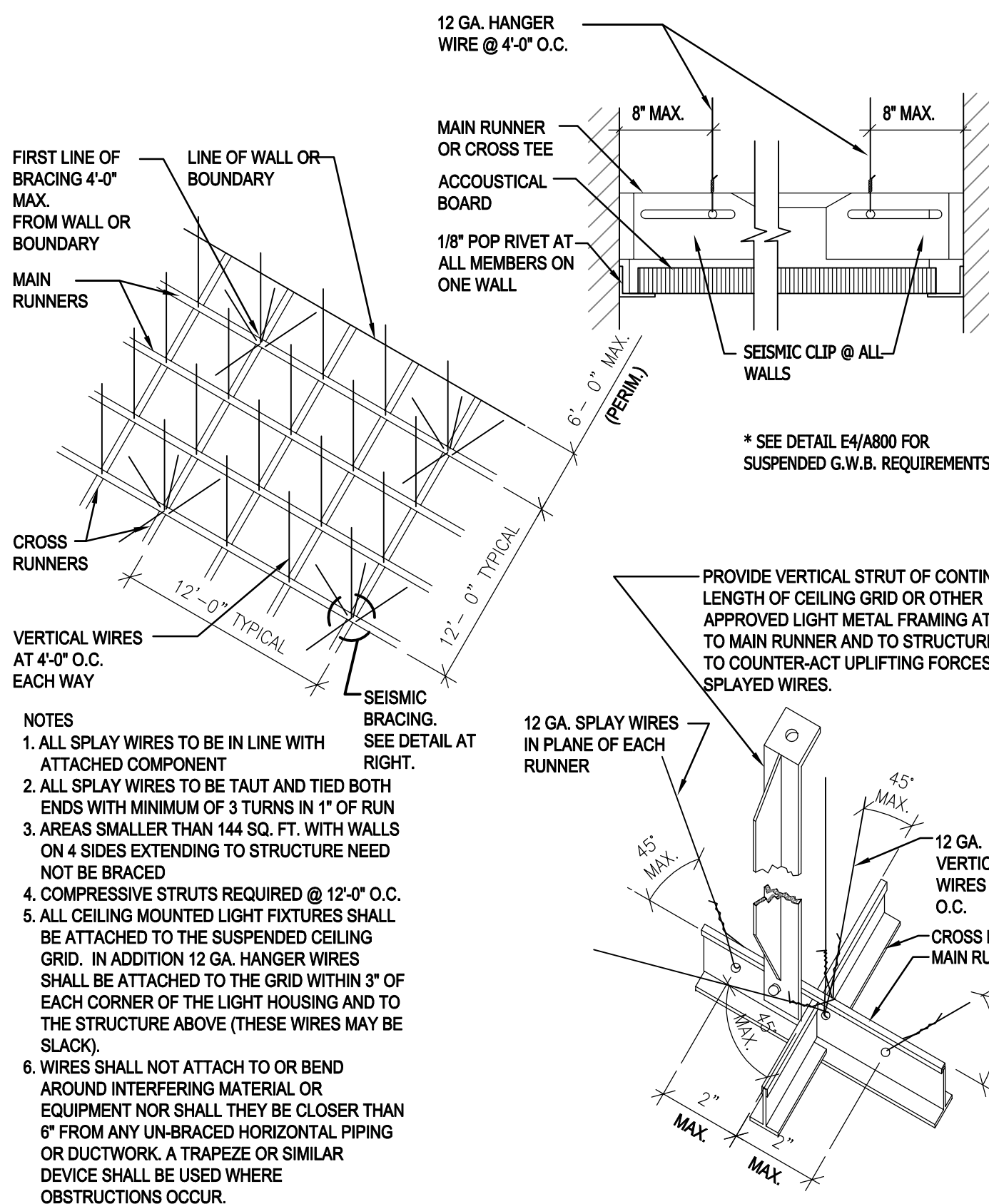
- 2A GRIND SMOOTH EXISTING SLIT FACE CMU BLOCK BAND WIDTH OF STOREFRONT SYSTEM.
- 2B EXG FLOOR COVERINGS, PROTECT IN PLACE
- 2C REMOVE EXG CEILING SYSTEM AS REQUIRED TO INSTALL NEW DOOR/HEADER. REPAIR/REPLACE TO MATCH EXG CEILING TYPE/HEIGHT
- 2E EXISTING MILLWORK, PROTECT IN PLACE

DIVISION 8 - DOORS & WINDOWS

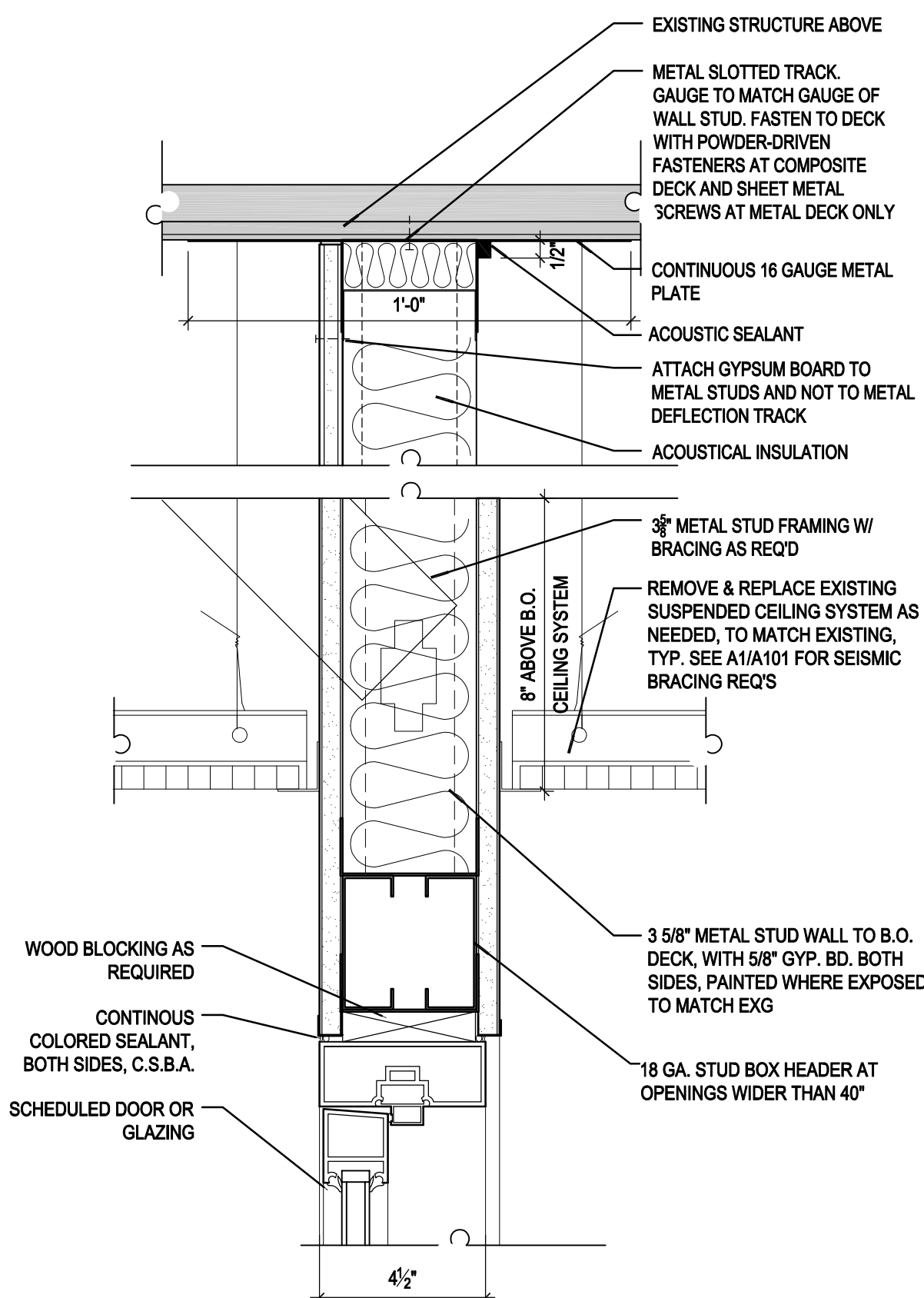
- 8A SCHEDULED DOOR & FRAME

DIVISION 16 - ELECTRICAL

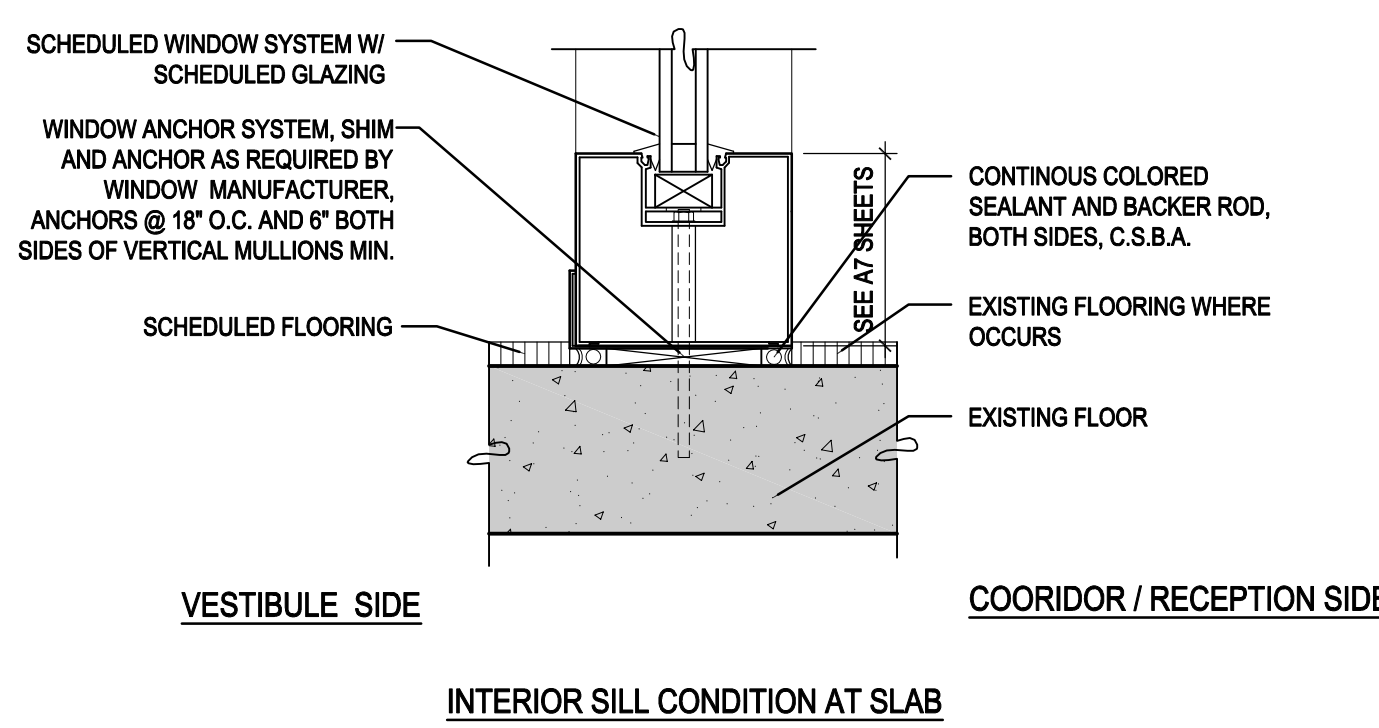
- 16A CARD READER
- 16B LOCKDOWN/DOOR RELEASE BUTTONS, MOUNTED UNDER COUNTERTOP. SEE ELECTRICAL DRAWING FOR DETAILS



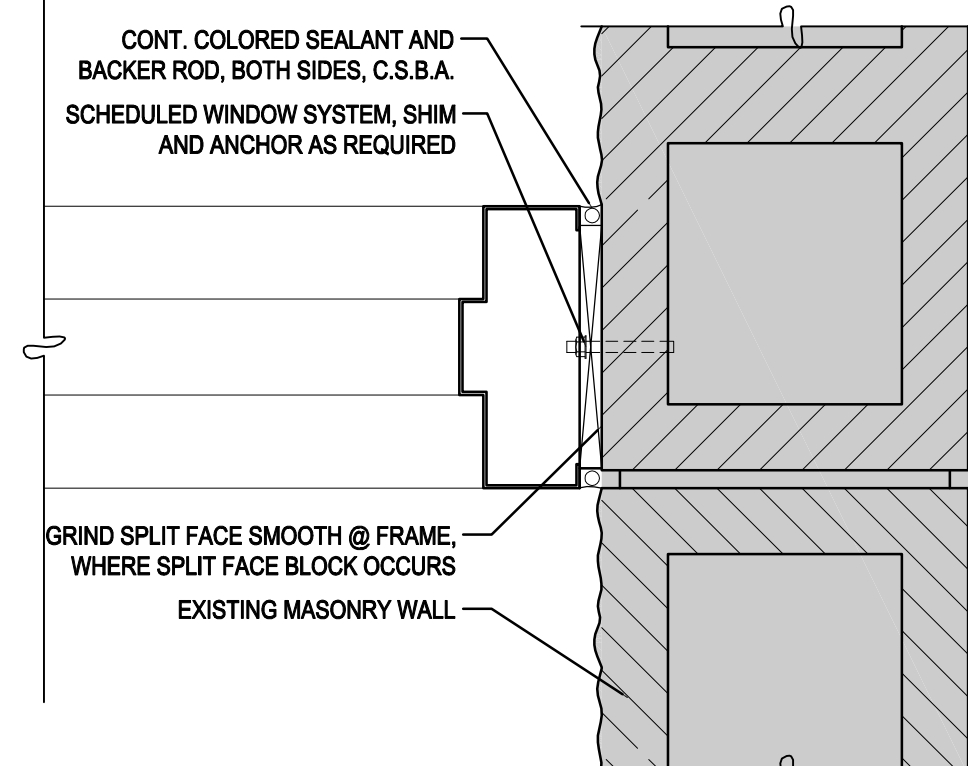
A1 TYP. CEILING SUSPENSION & SEISMIC BRACING
SCALE: 6" = 1'-0"



A2 ALUM. DOOR HEAD & JAMB DETAIL
SCALE: 3" = 1'-0"



A4 ALUMINUM WINDOW SILL TYP.
SCALE: 3" = 1'-0"



A5 ALUM. WINDOW TO PERPENDICULAR MASONRY
SCALE: 3" = 1'-0"

ABBREVIATION SCHEDULE			
NOTE: NOT ALL ABBREVIATIONS MAY BE USED.			
A	ABOVE COUNTER	ISO	ISOLATED
A	AMP OR AMPS	KVA	KILO VOLT AMPERES
ADJ	ADJACENT	KW	KILOWATTS
AFF	ABOVE FINISHED FLOOR	LFMC	LIQUID-TIGHT METAL CONDUIT
AHJ	AUTHORITY HAVING JURISDICTION	LFNC	LIQUID-TIGHT NONMETAL CONDUIT
AL	ALUMINUM	MCA	MINIMUM CIRCUIT AMPS
C	CONDUIT	M.O.	MANU LUS ONLY
CB	CIRCUIT BREAKER	N.C.	NORMALLY CLOSED
CKT	CIRCUIT	N.I.C.	NIGHT LIGHT
C.O.'S	CONVENIENCE OUTLETS	N.L.	NIGHT LIGHT
CU	COPPER	N.O.	NORMALLY OPEN
ELEC	ELECTRICAL	O.C.	ON CENTER(S)
EA	EACH	O.P.	OVER CURRENT PROTECTION
EM	EMERGENCY	QTY	QUANTITY
EMT	ELECTRIC METALLIC TUBING	R	REMOVE
ENT	ELECTRIC NONMETALLIC TUBING	REQ	REQUIREMENTS
EQUIP	EQUIPMENT	RMC	RIGID METAL CONDUIT
EWIC	ELECTRIC WATER COOLER	RNC	RIGID NONMETALLIC CONDUIT
E, EX	EXISTING	RR	REMOVE AND RELOCATE
EXP	EXPLOSION PROOF	SS	SURGE SUPPRESSION
FA	FIRE ALARM	SCP	SECURITY CONTROL PANEL
FACP	FIRE ALARM CONTROL PANEL	TR	TAMPER RESISTANT
FLA	FULL LOAD AMPS	TYP	TYPICAL
FMC	FLEXIBLE METAL CONDUIT	TVSS	TRANSIENT VOLTAGE SURGE SUPPRESSOR
FOB	FREIGHT ON BOARD	UF	UNDER FLOOR
GND	GROUND CONDUCTOR	UG	UNDERGROUND
HOA	HAND-OFF-AUTO	U.N.O.	UNLESS NOTED OTHERWISE
HP	HORSE POWER	W	WITH
IG	ISOLATED GROUND	WP	WEATHER PROOF
IMC	INTERMEDIATE METAL CONDUIT	XFMR	TRANSFORMER
INS	INSULATED		

LIGHTING SYMBOLS			
1. LIGHT FIXTURE SYMBOLS ARE GENERAL IN NATURE AND MAY BE SHOWN ON THE DRAWINGS IN VARIOUS SIZES AND SHAPES. REFER TO THE LIGHT FIXTURE SCHEDULE FOR SPECIFICATION INFORMATION.			
2. ARROWS INDICATE AIMING DIRECTION.			
SYMBOL	DESCRIPTION	MOUNTING	REMARKS
	ARM-MOUNTED SINGLE-HEAD LIGHT FIXTURE AND POLE	AS SPECIFIED OR DETAILED	
	ARM-MOUNTED DOUBLE-HEAD LIGHT FIXTURE AND POLE	AS SPECIFIED OR DETAILED	
	POST-TOP SINGLE-HEAD, LIGHT FIXTURE AND POLE	AS SPECIFIED OR DETAILED	
	WALL-MOUNTED FIXTURE	AS SPECIFIED OR DETAILED	REFER TO ARCHITECTURAL EXTERIOR ELEVATIONS FOR MOUNTING HEIGHT
	LIGHT BOLLARD	AS SPECIFIED OR DETAILED	
	FLOOD LIGHT	AS SPECIFIED OR DETAILED	
	RECESSED WALL FIXTURE OR STEP LIGHT	AS SPECIFIED OR DETAILED	REFER TO ARCHITECTURAL EXTERIOR ELEVATIONS FOR MOUNTING HEIGHT
	FLUORESCENT LIGHT FIXTURES	AS SPECIFIED OR DETAILED	
	PARABOLIC - LOUVERED LIGHT FIXTURES	AS SPECIFIED OR DETAILED	
	RECESSED INDIRECT FLUORESCENT LIGHT FIXTURES	AS SPECIFIED OR DETAILED	
	WALL-MOUNTED LINEAR FLUORESCENT LIGHT FIXTURE	AS SPECIFIED OR DETAILED	
	FLUORESCENT LINEAR WALL WASHER	AS SPECIFIED OR DETAILED	
	RECESSED DOWN LIGHT	AS SPECIFIED OR DETAILED	
	RECESSED WALL-WASHER OR DIRECTIONAL DOWNLIGHT	AS SPECIFIED OR DETAILED	IF SHOWN, ARROW INDICATES AIMING DIRECTION
	SURFACE OR PENDANT-MOUNTED LIGHT FIXTURE	AS SPECIFIED OR DETAILED	
	WALL-MOUNTED LIGHT FIXTURE	AS SPECIFIED OR DETAILED	REFER TO ARCHITECTURAL EXTERIOR ELEVATIONS FOR MOUNTING HEIGHT
	TRACK OR MONO-POINT LIGHT FIXTURE	AS SPECIFIED OR DETAILED	IF SHOWN, ARROW INDICATES AIMING DIRECTION
	WALL SCONCE	AS SPECIFIED OR DETAILED	
	FLUORESCENT EGRESS LIGHT FIXTURE	AS SPECIFIED OR DETAILED	THIS IS AN EXAMPLE OF AN EGRESS LIGHT FIXTURE. EGRESS LIGHT FIXTURES ARE HALF-SHADED DIAGONALLY.
	FLUORESCENT EMERGENCY (NON-EGRESS) LIGHT FIXTURE	AS SPECIFIED OR DETAILED	THIS IS AN EXAMPLE OF AN EMERGENCY (NON-EGRESS) LIGHT FIXTURE. EMERGENCY FIXTURES ARE FULLY-SHADED.
	CEILING MOUNTED EXIT SIGN	CEILING	DARKENED PORTION OF SIGN INDICATES FACE(S); ARROW(S) INDICATE CHEVRON DIRECTION(S)
	WALL-MOUNTED EXIT SIGN	WALL ABOVE DOOR	
	WALL-MOUNTED EXIT SIGN W/ EMERGENCY LIGHT FIXTURE	WALL ABOVE DOOR	
	TIME CLOCK	+60"	
	EMERGENCY LIGHT FIXTURE	AS NOTED	
	ELECTRIC PHOTOCCELL	N/A	MOUNT ON ROOF FACING NORTH SKY
	LIGHT FIXTURE CALLOUT (LETTER DENOTES FIXTURE TYPE)		

GENERAL PROJECT NOTES:

- DIVISION 26 CONTRACTOR IS RESPONSIBLE FOR READING AND APPLYING WHAT IS IN THE SPECIFICATIONS TO THIS PROJECT. ANYTHING THAT IS NOT INCLUDED ON THE PROJECT THAT IS CALLED OUT IN THE SPECIFICATION SHALL BE LISTED ON THE SUBSTANTIAL COMPLETION PUNCHLIST. THE CONTRACTOR WILL BE REQUIRED TO REMEDY THESE DEFICIENCIES. THERE WILL BE NO EXCEPTIONS.
- THE CONTRACTOR MAY SCHEDULE A PRE-CONSTRUCTION MEETING. AT THEIR DISCRETION WITH THE ELECTRICAL ENGINEER AND REVIEW THE DRAWINGS AND SPECIFICATIONS. THE MEETING SHALL BE A MAXIMUM OF ONE HOUR AND SHALL TAKE PLACE AT THE ENGINEER'S OFFICE.
- THE FOLLOWING ITEMS ARE SOME OF THE REQUIREMENTS THAT ARE LISTED IN THE SPECIFICATIONS, THESE ITEMS DO NOT REPRESENT ALL ITEMS AND THE CONTRACTOR IS RESPONSIBLE FOR MEETING ALL REQUIREMENTS OF THE SPECIFICATIONS:
 - INSULATED THROAT CONNECTORS OR PLASTIC BUSHINGS SHALL BE UTILIZED FOR ALL CONDUIT SIZES USED ON THIS PROJECT.
 - THE CONTRACTOR SHALL LABEL ALL ELECTRICAL EQUIPMENT AS IT IS CALLED OUT IN THE SPECIFICATIONS.
 - THE CONTRACTOR SHALL PROVIDE SEISMIC SUPPORT AND BRACING FOR ALL ELECTRICAL EQUIPMENT AS REQUIRED BY LOCAL AND NATIONAL CODE.
- THE CONTRACTOR IS RESPONSIBLE TO ENSURE THE WIRE IS LARGE ENOUGH FOR VOLTAGE DROP.
- THE CONTRACTOR SHALL VISIT THE SITE BEFORE SUBMITTING THE BID, AND SHALL EXAMINE ALL PHYSICAL CONDITIONS WHICH MAY BE MATERIAL TO THE PERFORMANCE OF HIS WORK. NO EXTRA PAYMENTS WILL BE ALLOWED TO THE CONTRACTOR AS A RESULT OF EXTRA WORK MADE NECESSARY BY HIS FAILURE TO DO SO. ANY CASE OF DISCREPANCY OR LACK OF CLARITY SHALL BE PROMPTLY IDENTIFIED TO THE OWNERS REPRESENTATIVE AND THE ENGINEER FOR CLARIFICATION.
- THE CONTRACTOR SHALL MAKE SURE THAT ALL BRANCH CIRCUITS THAT ARE AFFECTED BY THIS PROJECT ARE NOT OVERLOADED. PROVIDE ADDITIONAL BRANCH CIRCUITS FROM ELECTRICAL PANELS AS NECESSARY TO COMPLY WITH THE BRANCH CIRCUIT LOADING REQUIREMENTS. PROVIDE ALL MATERIAL AND LABOR AS NECESSARY FOR A COMPLETE AND OPERATING SYSTEM.
- PROVIDE UPDATED, TYPED PANELBOARD SCHEDULE(S) TO REFLECT ALL THE CHANGES MADE INCLUDING EXISTING LOADS. THE EXISTING LOADS SHALL BE NAMED THE SAME AS LISTED ON THE EXISTING PANELBOARD SCHEDULE.

SECURITY SYMBOLS			
SYMBOL	DESCRIPTION	MOUNTING	REMARKS
	MOTION DETECTOR	CEILING	SUBSCRIPT DENOTES DEGREES OF MONITORED AREA
	KEYPAD	+48"	
	OVERHEAD MAGNETIC CONTACT DOOR SWITCH	DOOR	
	MAGNETIC CONTACT DOOR SWITCH	DOOR	
	GLASS BREAK DETECTOR	CEILING	
	SIREN	+60"	

ACCESS CONTROL SYMBOLS			
SYMBOL	DESCRIPTION	MOUNTING	REMARKS
	REQUEST-TO-EXIT MOTION DETECTOR	CEILING	
	ELECTROMAGNETIC DOOR STRIKE	DOOR	
	MAGNETIC DOOR CONTACT SWITCH	DOOR	
	MAGNETIC LOCK	DOOR	
	DURESS PUSH-BUTTON	BELOW DESK	
	LOCK DOWN PUSH-BUTTON	DESK	
	DOOR CONTROL PUSH-BUTTON	DESK	
	PROXIMITY CARD READER	+48"	
	WIRELESS ACCESS PANEL INTERFACE MODULE	ABOVE CLG	
	PROXIMITY CARD READER / KEYPAD	+48"	
	MAGNETIC STRIP CARD READER	+48"	

CLOSED CIRCUIT TELEVISION SYMBOLS			
SYMBOL	DESCRIPTION	MOUNTING	REMARKS
	CLOSED CIRCUIT TELEVISION CAMERA (FIXED)	CEILING	
	CLOSED CIRCUIT TELEVISION CAMERA (PANTILT/ZOOM)	CEILING	
	CLOSED CIRCUIT TELEVISION CAMERA (HIGH SPEED DOME WITH PAN / TILT / ZOOM HEAD)	CEILING	
	CLOSED CIRCUIT TELEVISION MONITOR	DESK	
	MATRIX SWITCHER	DESK	
	FIBER JUNCTION BOX	72" TO TOP OF BOX	

GEAR AND CONTROL SYMBOLS			
SYMBOL	DESCRIPTION	MOUNTING	REMARKS
	MANUAL STARTER WITH THERMAL OVERLOAD(S)	AT EQUIPMENT	
	ELECTRIC MOTOR		
	NON-FUSED DISCONNECT SWITCH	TOP AT +48"-72"	
	FUSED DISCONNECT SWITCH	TOP AT +48"-72"	
	CIRCUIT BREAKER AND ENCLOSURE	TOP AT +48"-72"	
	MAGNETIC STARTER	TOP AT +48"-72"	
	COMBINATION MAGNETIC STARTER / NON-FUSED DISCONNECT	TOP AT +48"-72"	
	COMBINATION MAGNETIC STARTER / FUSED DISCONNECT	TOP AT +48"-72"	
	COMB. MAGNETIC STARTER / MOTOR CIRCUIT PROTECTOR (MCP)	TOP AT +48"-72"	
	FLOOR OR WALL AS SPECIFIED	FLOOR OR WALL AS SPECIFIED	TOP AT +72" IF WALL MOUNTED
	REDUCED VOLTAGE STARTER	FLOOR OR WALL AS SPECIFIED	TOP AT +72" IF WALL MOUNTED
	LOAD CENTER (SURFACE-MOUNTED)	TOP AT +72"	14"W X 3"D
	LOAD CENTER (FLUSH-MOUNTED)	TOP AT +72"	14"W X 3"D
	LIGHTING AND APPLIANCE PANELBOARD (SURFACE-MOUNTED)	TOP AT +72"	20"W X 6"D
	LIGHTING AND APPLIANCE PANELBOARD (FLUSH-MOUNTED)	TOP AT +72"	20"W X 6"D
	POWER DISTRIBUTION PANELBOARD	WALL	THESE SYMBOLS ARE GENERAL IN NATURE AND MAY VARY IN SIZE AND SHAPE TO SUIT APPLICATION. CROSS HATCHING INDICATES 'MAIN' PANELBOARD OR SWITCHBOARD' NAME IS INDICATED IN SEMI-QUOTES (I.E. 'L2A', 'MCP')
	SWITCHBOARD	FLOOR	
	METER BASE	TOP AT +72"	FURNISH SWITCH UNLESS FURNISHED BY ANOTHER DIVISION. INSTALL AND CONNECT COMPLETE. REFER TO RELATED SPECIFICATION SECTIONS.
	OPEN - STOP - CLOSE SWITCH	+60"	
	HVAC THERMOSTAT	+60"	PROVIDED BY DIVISION 15000 U.N.O.
	HAND - OFF - AUTO SWITCH	+60"	
	GROUND FAULT PROTECTION		

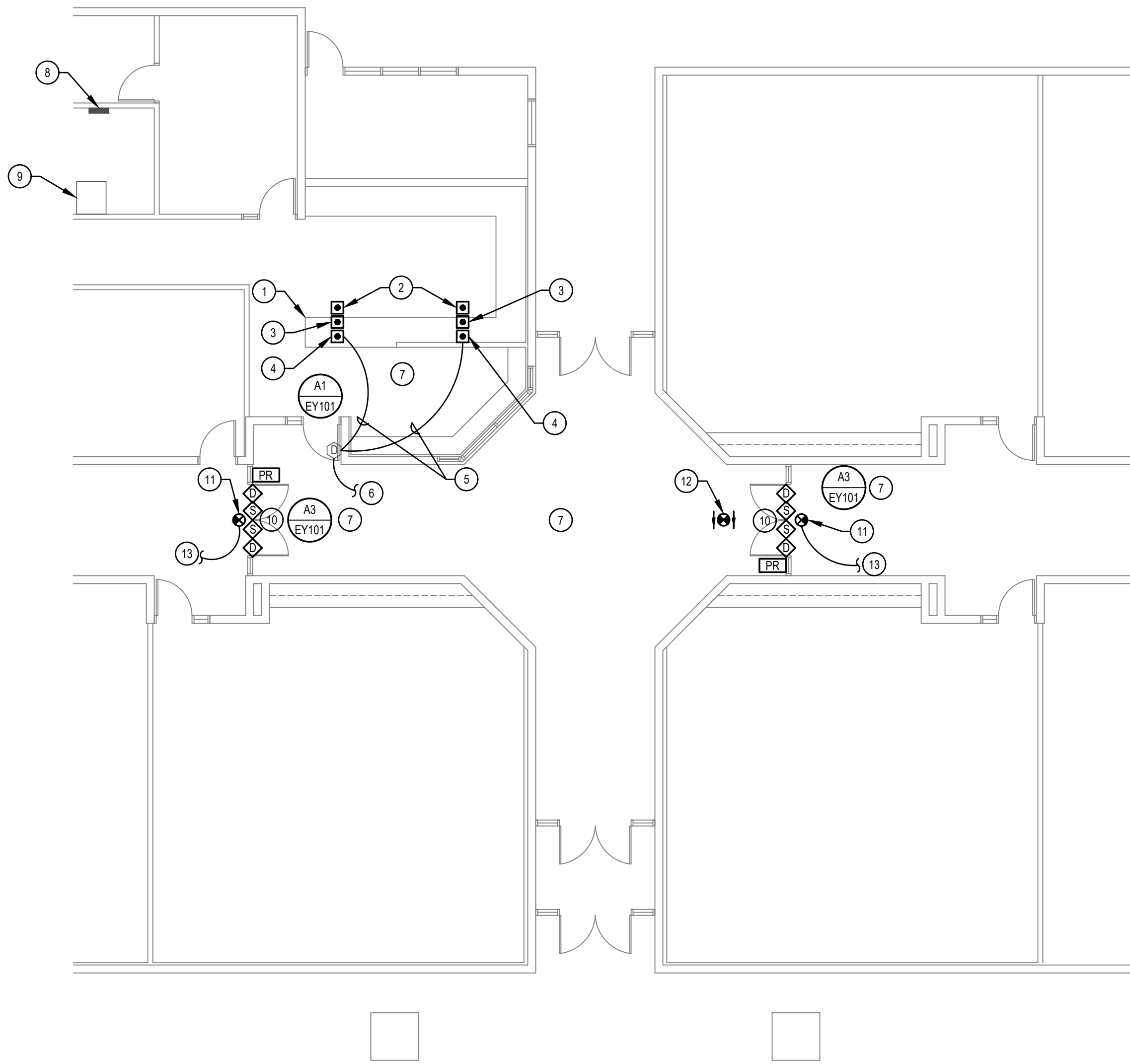
WIRING DEVICE SYMBOLS			
SYMBOL	DESCRIPTION	MOUNTING	REMARKS
	SINGLE-POLE TOGGLE SWITCH	+48"	
	DOUBLE-POLE TOGGLE SWITCH	+48"	SUBSCRIPT KEYS SWITCH TO FIXTURES CONTROLLED.
	THREE-WAY TOGGLE SWITCH	+48"	
	FOUR-WAY TOGGLE SWITCH	+48"	
	KEY-OPERATED SINGLE-POLE TOGGLE SWITCH	+48"	
	SINGLE-POLE TOGGLE SWITCH WITH PILOT LIGHT	+48"	
	DIMMER SWITCH	+48"	RATE DIMMER SWITCH FOR MAXIMUM POSSIBLE WATTAGE
	TIMER SWITCH	+48"	
	(2) SINGLE-POLE TOGGLE SWITCH	+48"	DUAL LEVEL SWITCH OUTBOARD LAMPS SEPARATELY FROM INBOARD LAMPS.
	LOW VOLTAGE MOMENTARY CONTACT SWITCH	+48"	
	3-POSITION MOMENTARY CONTACT SWITCH	+48"	REFER TO DETAIL UP-ON, CENTER-NEUTRAL, DOWN-OFF
	3-POSITION MAINTAINED CONTACT SWITCH	+48"	UP-ON, CENTER-OFF, DOWN-ON
	OCCUPANCY SENSOR	AS NOTED	CEILING MOUNTED WITH SUBSCRIPT 'C', WALL MOUNTED WITH SUBSCRIPT 'W'
	SPLIT-WIRED DUPLEX RECEPTACLE	+18"	
	SIMPLEX RECEPTACLE	+18"	
	DUPLEX RECEPTACLE	+18"	
	125/250V RECEPTACLE	+18"	RANGE - NEMA 14-30R DRYER - NEMA 14-30R
	FOURPLEX RECEPTACLE	+18"	
	GROUND FAULT CIRCUIT INTERRUPTER DUPLEX RECEPTACLE	+18"	
	GROUND FAULT CIRCUIT INTERRUPTER FOURPLEX RECEPTACLE	+18"	
	EMERGENCY DUPLEX RECEPTACLE	+18"	
	EMERGENCY FOURPLEX RECEPTACLE	+18"	
	MULTI-OUTLET ASSEMBLY	+4" ABOVE BACKSPLASH	
	POWER / TELEPHONE POLE	FLOOR/CEILING	
	CORD DROP WITH DUPLEX RECEPTACLE		REFER TO DETAIL
	SPECIAL PURPOSE OUTLET	+18"	SUBSCRIPT IN PARENTHESIS INDICATES NEMA CONFIGURATION IF SHOWN. REFER TO DRAWINGS AND/OR EQUIPMENT SCHEDULES. CONFIRM EXACT CONFIGURATION WITH OWNER PRIOR TO INSTALLATION.
	(5-20R)		

ELECTRICAL SYMBOL SCHEDULE GENERAL NOTES	
1. MOUNT ALL OUTLETS, DEVICES, AND EQUIPMENT AT HEIGHTS INDICATED BELOW, UNLESS NOTED OTHERWISE ON THE DRAWINGS. UNLESS NOTED OTHERWISE, HEIGHTS ARE GIVEN FROM FINISHED FLOOR TO CENTER OF OUTLET BOX.	
2. WHERE OUTLETS, DEVICES, AND EQUIPMENT ARE NOTED BY SUBSCRIPTS, REFER TO ABBREVIATION SCHEDULE FOR DEFINED REQUIREMENTS.	
3. WHERE OUTLETS, DEVICES AND EQUIPMENT ARE NOTED BY THE SUBSCRIPT 'A', MOUNT AT 4" ABOVE COUNTER. IF COUNTER HAS A BACK SPLASH, MOUNT AT 4" ABOVE BACK SPLASH. REFER TO ARCHITECTURAL INTERIOR ELEVATIONS AND COORDINATE WITH CASEWORK SUPPLIER.	
4. NOT ALL ELECTRICAL SYMBOLS MAY BE USED.	

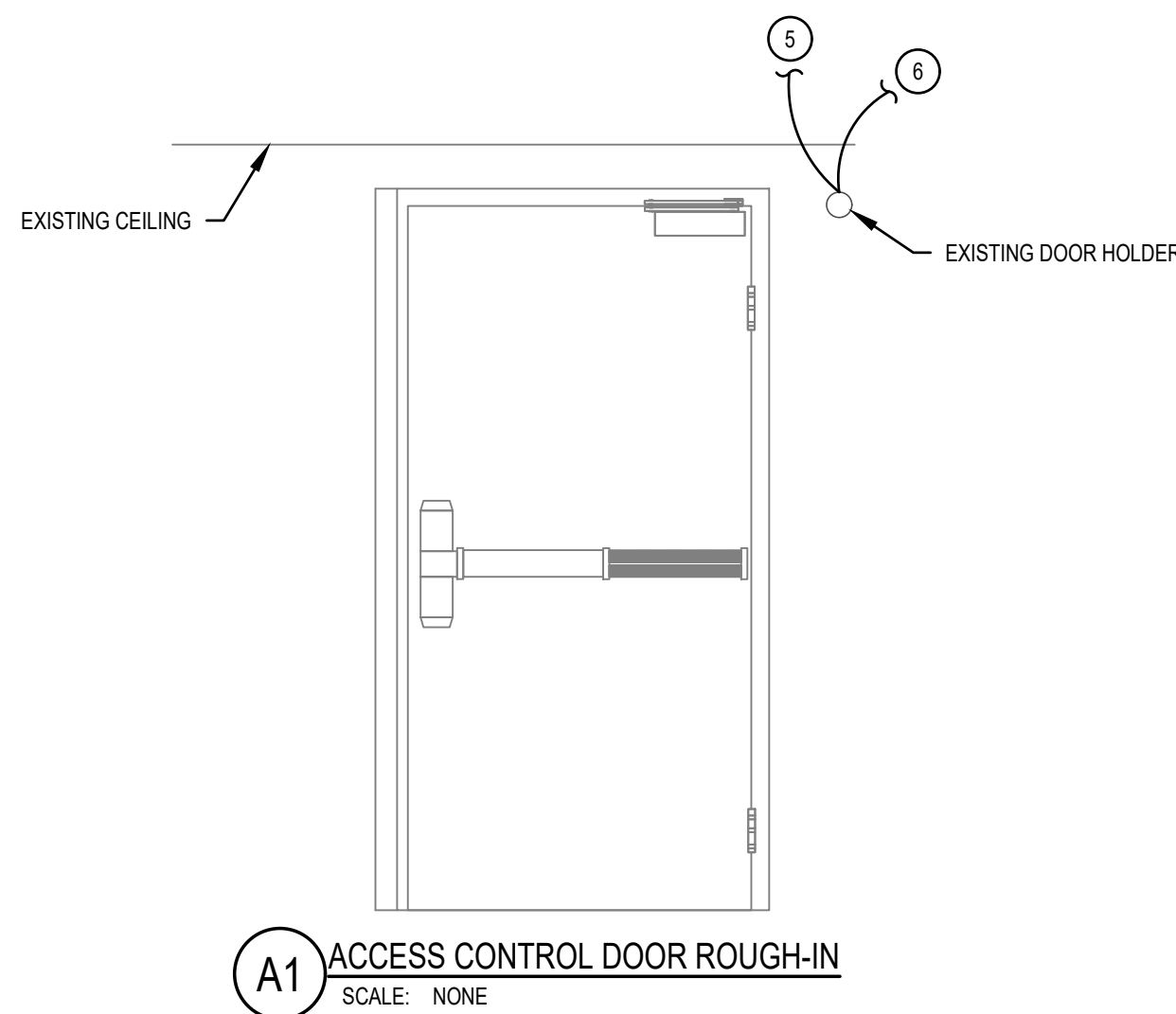
GENERAL SYMBOLS		
SYMBOL	DESCRIPTION	REMARKS
	KEYED NOTE	
	DETAIL REFERENCE	TOP NUMBER INDICATES DETAIL NUMBER. BOTTOM LETTER NUMBER INDICATES DRAWING SHEET WHERE DETAIL IS SHOWN, WHERE NOT SPECIFICALLY REFERENCED. DETAIL IS GENERAL IN NATURE AND SHALL APPLY WHERE APPLICABLE.
	ELEVATION REFERENCE	TOP NUMBER INDICATES ELEVATION NUMBER. BOTTOM LETTER NUMBER INDICATES WHERE ELEVATION IS SHOWN.
	SECTION REFERENCE	TOP NUMBER INDICATES SECTION NUMBER. BOTTOM LETTER NUMBER INDICATES WHERE SECTION IS SHOWN.
	ARCHITECTURAL ROOM NUMBER	
	EQUIPMENT NAME / NUMBER	TOP NUMBER ABBREVIATES EQUIPMENT NAME OR TYPE. BOTTOM NUMBER INDICATES EQUIPMENT NUMBER. REFER TO EQUIPMENT SCHEDULE.
	REVISION NUMBER	USED TO DENOTE CHANGES EITHER ISSUED BY ADDENDUM OR DURING CONSTRUCTION AND TO DENOTE RECORD DRAWING CHANGES.
	BREAKLINE	USED TO BREAK DRAWINGS.

FIRE ALARM SYMBOLS			
SYMBOL	DESCRIPTION	MOUNTING	REMARKS
	BEAM DETECTOR - TRANSMITTER	4" BELOW CEILING TO TOP OF DETECTOR	
	BEAM DETECTOR - RECEIVER	4" BELOW CEILING TO TOP OF DETECTOR	
	END OF LINE DEVICE	PER MANUFACTURER RECOMMENDATIONS	
	TAMPER SWITCH	AT VALVE	
	WATER FLOW INDICATOR	ON FIRE RISER	
	FIRE/SMOKE DAMPER	TOP AT 72"	
	HEAT DETECTOR	CEILING	
	SMOKE DETECTOR	CEILING	
	DUCT SMOKE DETECTOR	SIDE OF DUCT	
	FIRE ALARM MANUAL STATION	+48"	
	CONTROL MODULE	AT DEVICE(S) TO BE CONTROLLED	
	MONITOR MODULE	AT DEVICE(S) TO MONITOR	
	FAN SHUTDOWN RELAY	AT FAN CONTROL PANEL	
	MAGNETIC DOOR HOLDER	COORDINATE WITH DOOR INSTALLER	COORDINATE WITH DOOR INSTALLER, SUBSCRIPT 'F' INDICATES TO MOUNT AT FLOOR LEVEL
	WATER FLOOD INDICATOR	FLOOR	
	AUDIO HORN		
	MINI AUDIO HORN		
	FIRE ALARM VISUAL STROBE	MOUNT PER ALL NFPA 72 REQUIREMENTS	SUBSCRIPT 'W' INDICATES THAT A WEATHER PROOF BACK BOX IS REQ. SUBSCRIPT 'C' INDICATES CEILING MOUNTING.
	FIRE ALARM AUDIO/VISUAL HORN/STROBE		
	MINI AUDIO/VISUAL HORN/STROBE		
	FIRE ALARM AUDIO SPEAKER		
	FIRE ALARM AUDIO/VISUAL SPEAKER/STROBE		
	FIRE FIGHTERS TELEPHONE JACK	+48"	
	FIRE PROTECTION SPRINKLER RISER BELL	+90"	FURNISHED BY FIRE PROTECTION CONTRACTOR AND INSTALLED AND CONNECTED BY DIV. 16000

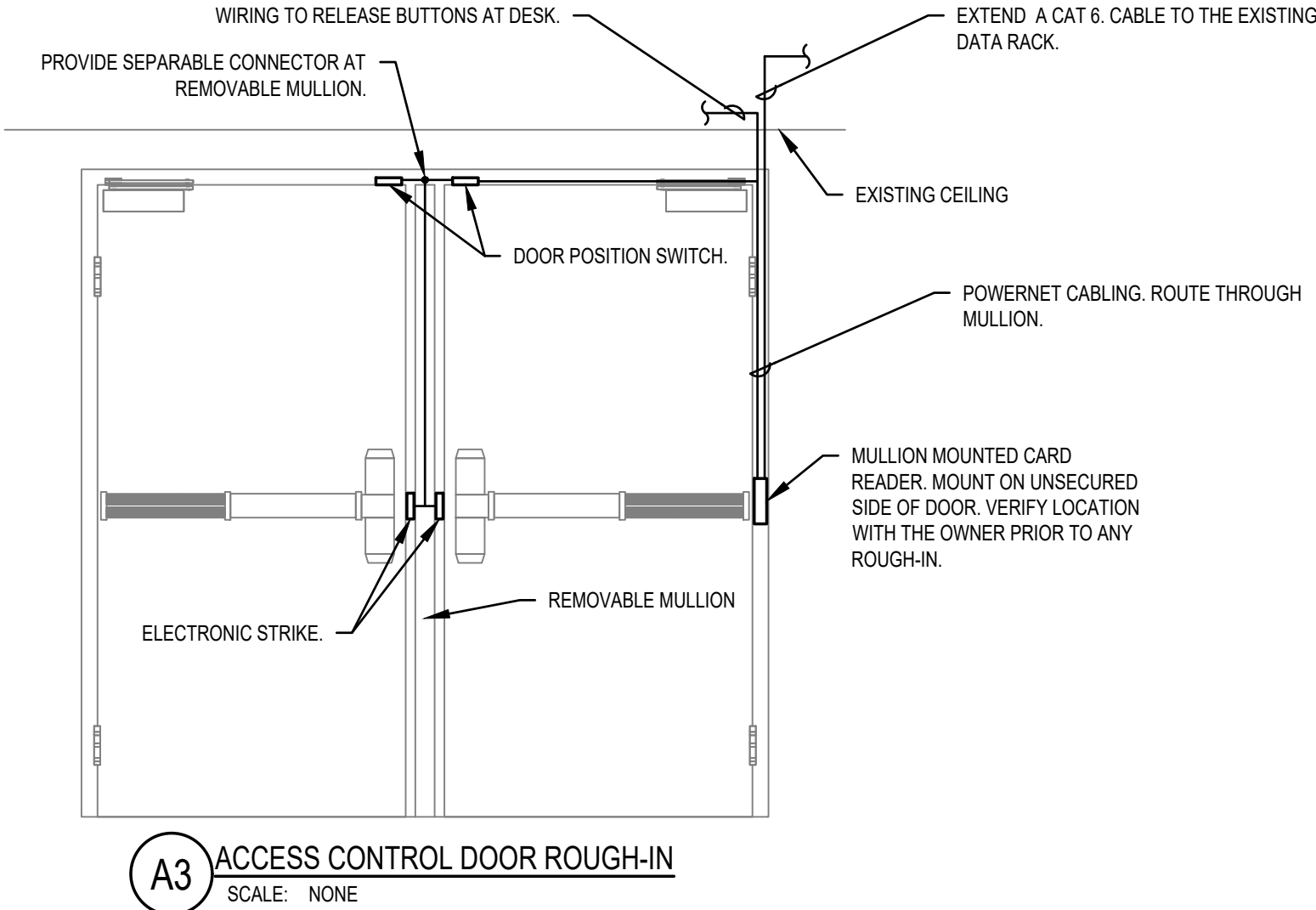
BRANCH CIRCUITING SYMBOLS		
SYMBOL	DESCRIPTION	REMARKS
	1 CIRCUIT, 2 WIRE BRANCH CIRCUIT HOME RUN TO PANEL	ARROWS: NUMBER OF ARROWS INDICATES NUMBER OF CIRCUITS REQUIRED. SHORT CROSS LINES: NUMBER OF SHORT CROSS LINES INDICATES NUMBER OF PHASE, TRAVELER, AND/OR SWITCHED CONDUCTORS REQUIRED IF GREATER THAN 1 (ONE).
	2 CIRCUIT, 3 WIRE BRANCH CIRCUIT HOME RUN TO PANEL	LONG CROSS LINES: NUMBER OF LONG CROSS LINES INDICATES NUMBER OF NEUTRAL CONDUCTORS REQUIRED FOR MULTI-WIRE HOME RUNS.
	3 CIRCUIT, 4 WIRE BRANCH CIRCUIT HOME RUN TO PANEL	EQUIPMENT GROUND AND ISOLATED GROUND CONDUCTORS: EQUIPMENT GROUND AND ISOLATED GROUND CONDUCTORS ARE NOT SHOWN, BUT ARE REQUIRED AS NOTED ON THE DRAWINGS OR IN THE SPECIFICATIONS.
	MULTIPLE WIRE BRANCH CIRCUITING BETWEEN FIXTURES, SWITCHES, DEVICES, ETC.	
	BRANCH CIRCUITING (U.N.O.) TURNED UP OR TOWARDS OBSERVER.	
	BRANCH CIRCUITING (U.N.O.) TURNED DOWN OR AWAY FROM OBSERVER.	
	BRANCH CIRCUITING (U.N.O.) CONTINUATION	
	CONDUIT STUB-IN	CAP AND MARK
	INCOMING SERVICE	
	JUNCTION BOX	MOUNT AS NOTED. SUBSCRIPT 'F' INDICATES TO PROVIDE A FLOOR BOX WITH BLANK COVERPLATE



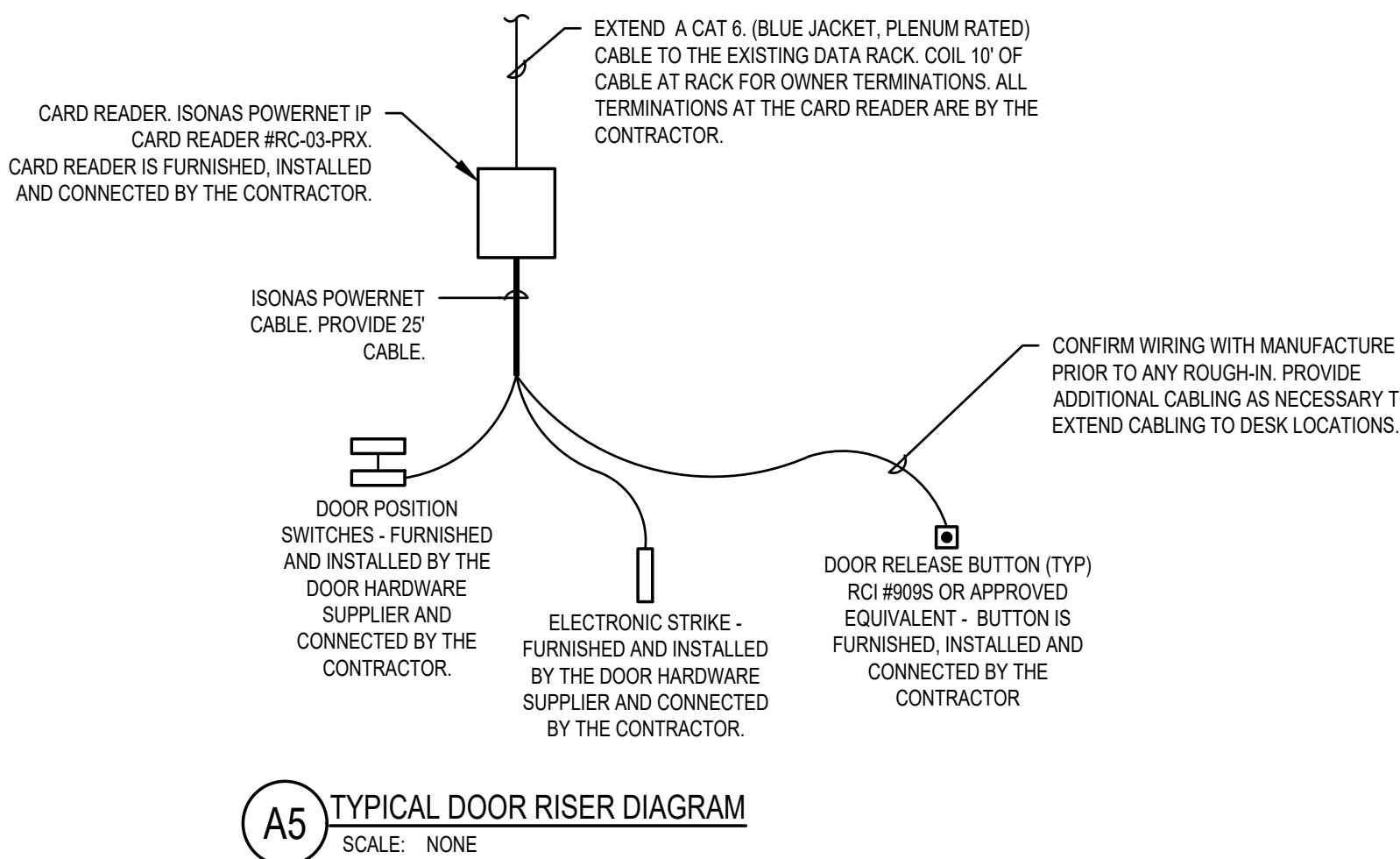
C3 LOBBY - SYSTEMS PLAN
SCALE: 1/8" = 1'-0"



A1 ACCESS CONTROL DOOR ROUGH-IN
SCALE: NONE



A3 ACCESS CONTROL DOOR ROUGH-IN
SCALE: NONE



A5 TYPICAL DOOR RISER DIAGRAM
SCALE: NONE

KEYED NOTES: #

- CONFIRM EXACT MOUNTING LOCATION OF ALL DOOR RELEASE BUTTONS AT THE RECEPTION DESK WITH THE OWNER PRIOR TO ANY ROUGH-IN. ALL CABLING TO BUTTONS SHALL BE CONCEALED IN THE CEILING AS WALLS. ROUTE CABLING SURFACE BELOW THE DESK. LABEL BUTTONS AS DIRECTED BY THE OWNER.
- PUSH BUTTON TO RELEASE EAST DOOR. PROVIDE LABEL ON BUTTON INDICATING DOOR CONTROLLED. CONFIRM LABELING WITH OWNER.
- PUSH BUTTON TO RELEASE WEST DOOR. PROVIDE LABEL ON BUTTON INDICATING DOOR CONTROLLED. CONFIRM LABELING WITH OWNER.
- PUSH BUTTON TO RELEASE DOOR HOLDER. PROVIDE LABEL ON BUTTON INDICATING DOOR CONTROLLED. CONFIRM LABELING WITH OWNER.
- PROVIDE ALL CABLING, CONTACTS / CONTROLS AS NECESSARY TO RELEASE DOOR HOLDER ONCE PUSH BUTTON IS ACTIVATED AT RECEPTION DESK.
- DOOR HOLDER TO RELEASE UPON ACTIVATION OF THE FIRE ALARM SYSTEM. CONTRACTOR TO VERIFY OPERATION. IF DOOR DOES NOT RELEASE UPON ACTIVATION OF THE FIRE ALARM SYSTEM, PROVIDE CONNECTIONS TO THE FIRE ALARM SYSTEM AS NECESSARY.
- ROUTE ALL CABLING THROUGH THE DOOR MULLION AND INTO THE ACCESSIBLE CEILING SPACE. ALL NEW CABLING SHALL BE CONCEALED TO THE GREATEST EXTENT POSSIBLE. SURFACE RACEWAY MAY BE USED WHERE CABLING IS EXTENDED TO THE RECEPTION DESK(S) WHERE BLOCK WALLS EXIST. CONFIRM ALL SURFACE RACEWAY LOCATIONS AND ROUTING WITH THE OWNER PRIOR TO INSTALLING ANY SURFACE RACEWAYS.
- EXISTING PANELBOARD.
- EXISTING DATA RACK.
- PROVIDE SEPARABLE CONNECTOR FOR WIRING HARNESS AT REMOVABLE MULLION SO WIRING CAN BE DISCONNECTED WHEN MULLION IS REMOVED. COORDINATE CONNECTOR TYPE WITH ACCESS CONTROL MANUFACTURER.
- PROVIDE NEW EXIT SIGN LITHONIA #LQM S W R E L N (OR APPROVED EQUIVALENT).
- REMOVE EXISTING SINGLE FACE EXIT SIGN AND PROVIDE NEW DOUBLE FACE EXIT SIGN LITHONIA #LQM S W R E L N (OR APPROVED EQUIVALENT). RECONNECT TO EXISTING BRANCH CIRCUIT.
- CONNECT NEW EXIT SIGN TO EXISTING BRANCH CIRCUIT FEEDING EXIT SIGNS IN THE SPACE. CONTRACTOR TO CONFIRM CIRCUIT PRIOR TO INSTALLATION.

GENERAL NOTES:

- THE CONTRACTOR SHALL VISIT THE SITE BEFORE SUBMITTING THE BID, AND SHALL EXAMINE ALL PHYSICAL CONDITIONS WHICH MAY BE MATERIAL TO THE PERFORMANCE OF HIS WORK. NO ADDITIONAL PAYMENTS WILL BE ALLOWED TO THE CONTRACTOR AS A RESULT OF EXTRA WORK MADE NECESSARY BY HIS FAILURE TO DO SO. ANY CASE OF DISCREPANCY OR LACK OF CLARITY SHALL BE PROMPTLY IDENTIFIED TO THE OWNER'S REPRESENTATIVE AND THE ENGINEER FOR CLARIFICATION.
- CONTRACTOR SHALL WORK CLOSELY WITH THE OWNER FOR DOOR REQUIREMENTS, ROUGH-IN AND WIRING.
- CONTRACTOR TO REFER TO THE MANUFACTURER'S WRITTEN INSTRUCTION FOR ALL REQUIRED INSTALLATION REQUIREMENTS AND WIRING REQUIREMENTS.
- INSTALL ACCESS CONTROL ON THE RIGHT HAND DOOR UNLESS OTHERWISE DIRECTED BY THE OWNER. VERIFY DOOR ROUGH-IN WITH THE OWNER PRIOR TO ANY ROUGH-IN.

CAT 6 CABLING GENERAL NOTES:

- CONTRACTOR SHALL COORDINATE ALL CABLING REQUIREMENTS AND WORK WITH OWNERS IT MANAGER PRIOR TO ROUGH-IN OR PULLING ANY CABLING.
- ALL CABLES SHALL BE TERMINATED AND LABELED AT BOTH ENDS. PROVIDE LABELING AS DIRECTED BY OWNERS IT MANAGER.
- CONTRACTOR IS RESPONSIBLE FOR TESTING ALL CABLES AND CONNECTIONS TO ENSURE BIDS) AND DATA STANDARDS ARE MET. PROVIDE A WRITTEN REPORT TO OWNER FOR EACH CABLE TESTED.
- ALL CABLING SHALL BE RUN IN CABLE TRAY WHERE AVAILABLE. WHERE CABLES ARE ROUTED IN ACCESSIBLE CEILINGS, SECURE AND SUPPORT CABLES WITH J-HOOKS. INSTALL EXPOSED CABLES PARALLEL AND PERPENDICULAR TO SURFACES OR EXPOSED STRUCTURAL MEMBERS, AND FOLLOW SURFACE CONTOURS. USE UL-LISTED PLENUM CABLE THROUGHOUT THE ENTIRE SYSTEM.
- THE CONTRACTOR SHALL PROVIDE ONE (1) PATCH CABLE PER INSTALLED CABLE. CONFIRM LENGTH WITH OWNERS IT MANAGER PRIOR TO ORDERING.

SURFACE RACEWAY

- PROVIDE WIREMOLD #2900 SERIES LATCHING RACEWAY SYSTEM (OR APPROVED EQUIVALENT).
- THE LATCHING RACEWAY AND ALL SYSTEM COMPONENTS MUST EXHIBIT NONFLAMMABLE SELF-EXTINGUISHING CHARACTERISTICS, TESTED TO COMPARABLE SPECIFICATIONS OF UL94V-0.
- THE 2900 SERIES LATCHING RACEWAY SHALL BE MANUFACTURED WITH A CO-EXTRUDED DESIGN OF RIGID PVC COMPOUND WITH A FLEXIBLE PVC HINGE. THE RACEWAY SHALL HAVE A SMOOTH FINISH, COLOR AS DETERMINED BY ARCHITECT AND SCHOOL DISTRICT.
- THE LATCHING RACEWAY SHALL BE A ONE-PIECE DESIGN WITH A FLEXIBLE HINGE. THE COVER SHALL OPEN TO PROVIDE ACCESSIBILITY AND LATCH SECURELY CLOSED. TOTAL WIDTH SHALL BE 1 00" BY 0.50" DEEP WITH AN APPROXIMATE THICKNESS OF .04". THE RACEWAY SHALL BE AVAILABLE IN 6" AND 8" LENGTHS AND BE SUPPLIED WITH ADHESIVE TAPE BACKING. SUPPORT RACEWAY A MINIMUM OF EVERY 4' WITH AN APPROVED LAG TYPE FASTING DEVICE.
- PROVIDE ALL FITTINGS (2900 SERIES) INCLUDING BUT NOT LIMITED TO FLAT, INTERNAL AND EXTERNAL ELBOWS, TEES, DROP CEILING FITTING, COVER CLIPS, AND END CAPS. FIBER OPTIC FITTINGS MUST BE AVAILABLE INCLUDING, BUT NOT LIMITED TO FLAT, INTERNAL AND EXTERNAL ELBOWS AND TEES. THESE FITTINGS SHALL BE OF TWO-PIECE CONSTRUCTION (BASE AND COVER) WITH SWEEP BEND RADIUS OF 125" MINIMUM. THESE FITTINGS SHALL HAVE INTEGRATED CABLE RETENTION FEATURES TO ALLOW CABLE LAY-IN, THUS AVOIDING EXCESSIVE LOADING. FITTINGS SHALL INCORPORATE PROTECTIVE FLANGES ELIMINATING CABLE SCUFFING BY SCREW HEADS. THEY SHALL BE MANUFACTURED OF A RIGID PVC COMPOUND. THE FITTINGS SHALL HAVE A SMOOTH TEXTURE, COLORS TO MATCH THE RACEWAY. THEY SHALL OVERLAP THE RACEWAY TO HIDE UNEVEN CUTS.
- DEVICE BOXES SHALL BE AVAILABLE FOR MOUNTING STANDARD DEVICES AND FACEPLATES. DEVICE BOXES SHALL BE SNAPPED ONTO A BASE. THEY SHALL BE MANUFACTURED OF RIGID PVC COMPOUND. THEY SHALL BE IN COLORS TO MATCH THE RACEWAY.
- ALL WORK SHALL INCLUDE FURNISHING ALL RACEWAY AND APPROPRIATE FITTINGS AND DEVICE PLATES TO INSTALL A NONMETALLIC SURFACE RACEWAY SYSTEM. INSTALLER SHALL COMPLY WITH DETAILED MANUFACTURER'S INSTRUCTION SHEETS, WHICH ACCOMPANY SYSTEM COMPONENTS, AS WELL AS SYSTEM INSTRUCTION SHEETS.
- KEEP SURFACE RACEWAYS TO A MINIMUM. SURFACE RACEWAY SHALL BE FROM THE CEILING SPACE TO THE DEVICE.