



ROVO CITY SCHOOL DISTRICT - OFFICE RECEPTION REMODEL
80 W 940 N Provo, Ut 84604

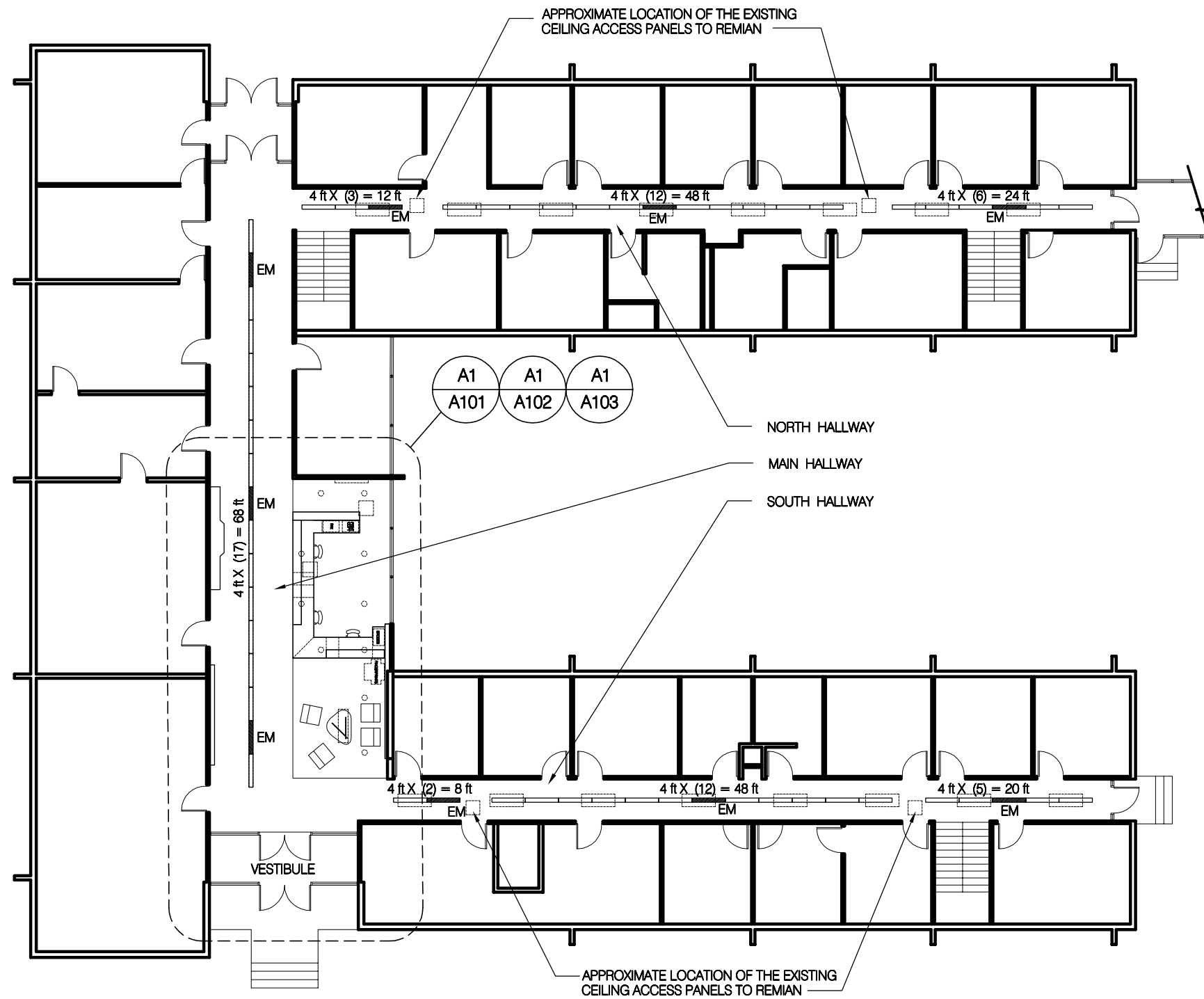
BID SET

DATE: 06/14/2017

DRAWING LIST:

- A100 - OVERALL PLAN
- A101 - DEMO PLAN
- A102 - NEW PLAN
- A103 - RCP
- A104 - MILLWORK ELEVATIONS
- A105 - MILLWORK SECTIONS
- A106 - MILLWORK SECTIONS





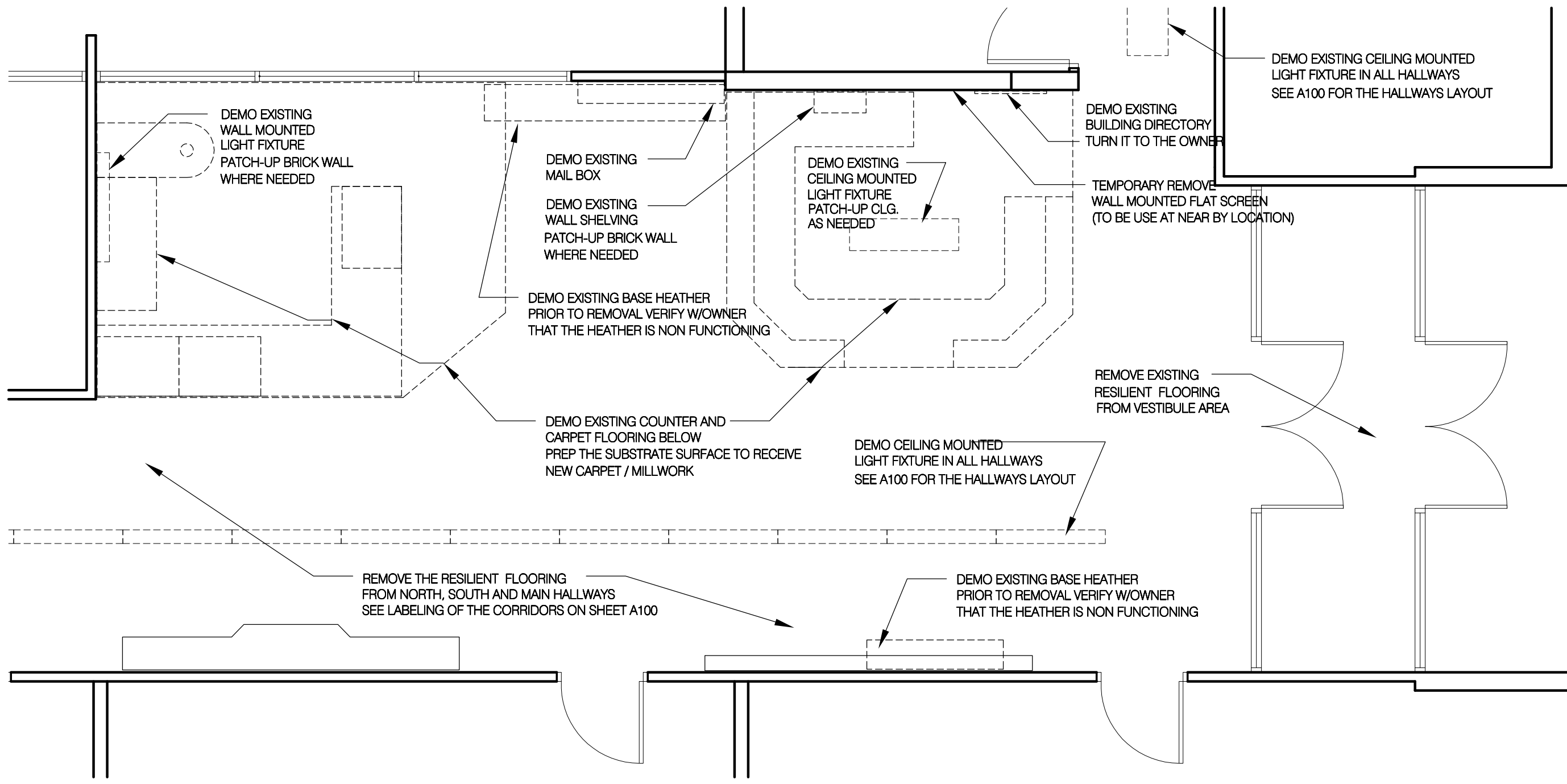
GENERAL NOTES:

- A. DEMO EXISTING AND INSTALL NEW FLOORING IN ALL HALLWAYS. SEE A101 FOR ADDITIONAL DEMO NOTES. SEE A102 (ENLARGED PLAN) FOR THE NEW FLOORING MATERIAL.
- B. DEMO EXISTING AND INSTALL NEW LIGHT FIXTURES IN ALL HALLWAYS. SEE A101 FOR ADDITIONAL DEMO NOTES. SEE A103 (RCP) FOR THE NEW LIGHT FIXTURE TYPES.
- C. IN LIEU OF SINGLE CEILING MOUNTED LIGHT FIXTURES ALONG NORTH AND SOUTH HALLWAYS INSTALL LINEAR "CONTINUOUS" - 'C' TYPE OF THE LIGHT FIXTURES, SIMILAR IN CHARACTER AS THE EXISTING LIGHTING IN THE MAIN HALLWAY. UTILIZE EXISTING CIRCUITS AND CONTROLS.
- D. VERIFY IN FIELD THE REQUIRED LENGTH OF THE "CONTINUOUS" LIGHT FIXTURE RUN AS IT IS SHOWN HERE CONCEPTUALLY.
- E. THE EMERGENCY LIGHTS DESIGNATED AS (EM) ON THIS SHEET TO THE EXISTING EMERGENCY CIRCUIT. PROVIDE BODINE GTD OR APPROVED EQUAL.



OVERALL PLAN

1/16"=1'-0"



DEMO EXISTING WALL MOUNTED LIGHT FIXTURE
PATCH-UP BRICK WALL WHERE NEEDED

DEMO EXISTING MAIL BOX
DEMO EXISTING WALL SHELVING
PATCH-UP BRICK WALL WHERE NEEDED

DEMO EXISTING BASE HEATHER
PRIOR TO REMOVAL VERIFY W/OWNER
THAT THE HEATHER IS NON FUNCTIONING

DEMO EXISTING COUNTER AND
CARPET FLOORING BELOW
PREP THE SUBSTRATE SURFACE TO RECEIVE
NEW CARPET / MILLWORK

DEMO EXISTING CEILING MOUNTED
LIGHT FIXTURE
PATCH-UP CLG.
AS NEEDED

DEMO EXISTING BUILDING DIRECTORY
TURN IT TO THE OWNER

TEMPORARY REMOVE
WALL MOUNTED FLAT SCREEN
(TO BE USE AT NEAR BY LOCATION)

REMOVE EXISTING
RESILIENT FLOORING
FROM VESTIBULE AREA

DEMO CEILING MOUNTED
LIGHT FIXTURE IN ALL HALLWAYS
SEE A100 FOR THE HALLWAYS LAYOUT

REMOVE THE RESILIENT FLOORING
FROM NORTH, SOUTH AND MAIN HALLWAYS
SEE LABELING OF THE CORRIDORS ON SHEET A100

DEMO EXISTING BASE HEATHER
PRIOR TO REMOVAL VERIFY W/OWNER
THAT THE HEATHER IS NON FUNCTIONING

DEMO EXISTING CEILING MOUNTED
LIGHT FIXTURE IN ALL HALLWAYS
SEE A100 FOR THE HALLWAYS LAYOUT

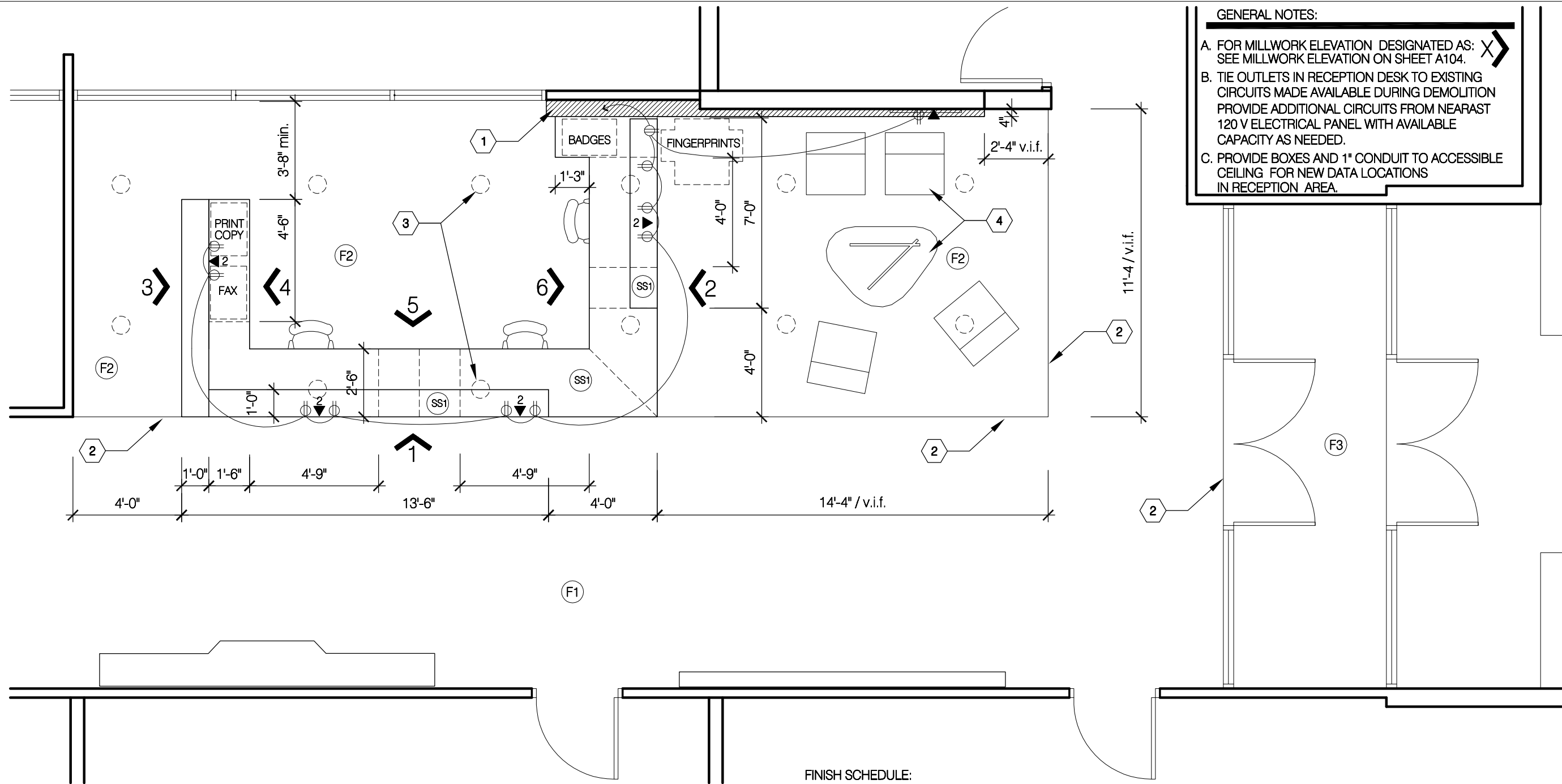
GENERAL NOTES:

- A. REMOVAL OF THE EXISTING RESILIENT FLOOR TILE NEED THE ASBESTOS ABATEMENT
- B. CAREFULLY APPROACH ALL DEMOLITIONS TO MINIMIZE PATCH-UP WORK
- C. IF THE PATCH-UP WORK IS NEEDED, THAN PATCH-UP THE SURFACES TO APPEAR INTACT, WITH SAME MATERIAL AND ORIGINAL COLOR



DEMO PLAN

1/4"=1'-0"



GENERAL NOTES:

A. FOR MILLWORK ELEVATION DESIGNATED AS: SEE MILLWORK ELEVATION ON SHEET A104.

B. TIE OUTLETS IN RECEPTION DESK TO EXISTING CIRCUITS MADE AVAILABLE DURING DEMOLITION. PROVIDE ADDITIONAL CIRCUITS FROM NEAREST 120 V ELECTRICAL PANEL WITH AVAILABLE CAPACITY AS NEEDED.

C. PROVIDE BOXES AND 1" CONDUIT TO ACCESSIBLE CEILING FOR NEW DATA LOCATIONS IN RECEPTION AREA.

KEY NOTES:

- 1 FURR-OUT WALL TO GENERATE FLAT SURFACE FOR THE WALL PANELING AND CAVITY FOR THE POWER / DATA WIRING.
- 2 PROVIDE FLOOR TRANSITION STRIP BETWEEN NEW FLOOR FINISHES AND CAVITY FOR THE POWER / DATA WIRING.
- 3 ELECTRICAL LIGHT FIXTURE SEE: RCP 1103
- 4 FURNISHING SHOWN FOR REFERENCE ONLY (NIC).

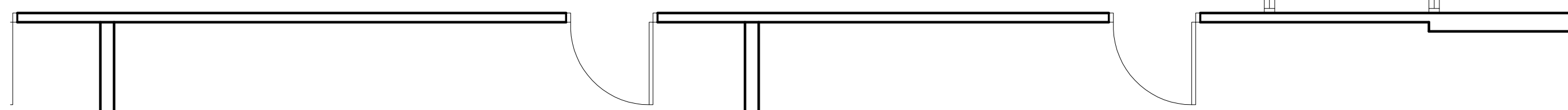
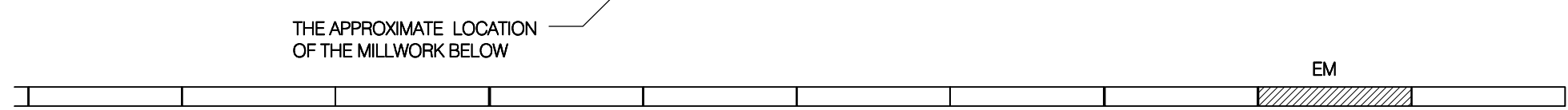
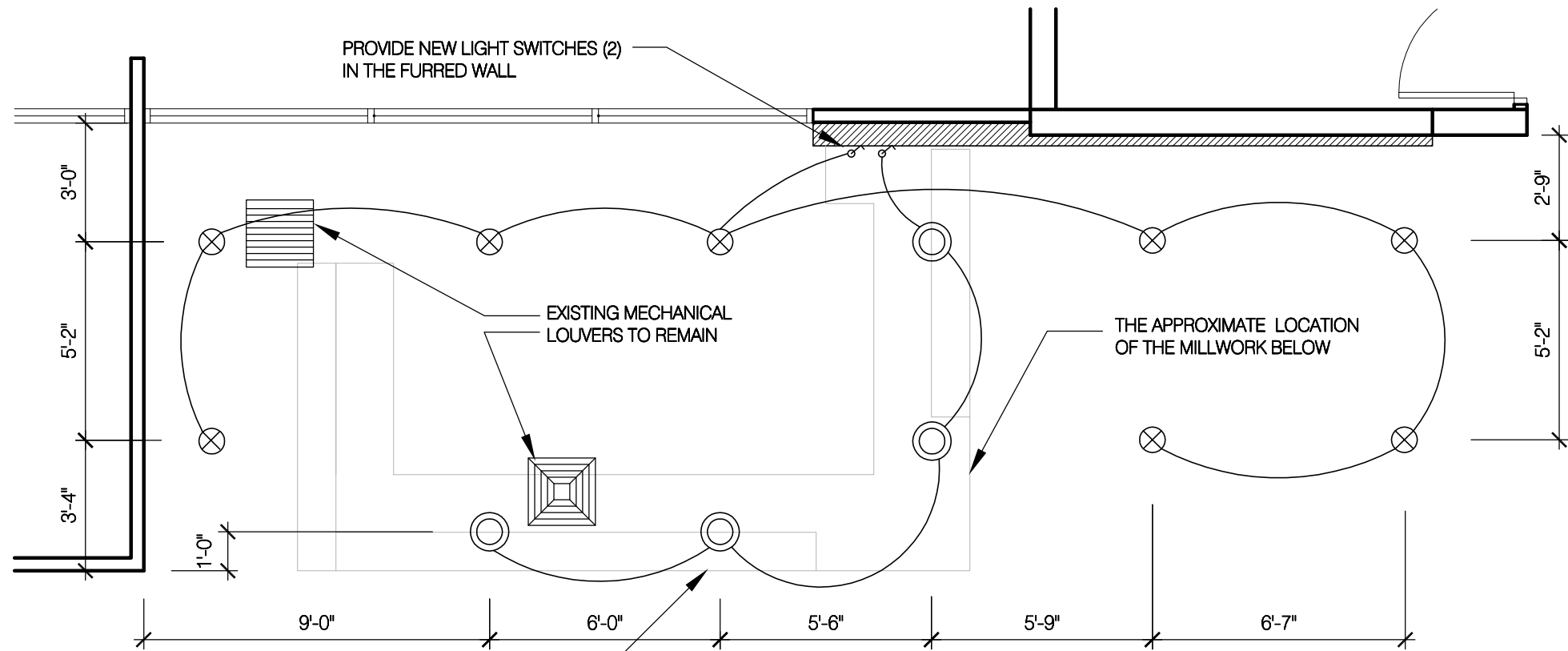
GENERAL NOTES:

NEW LINOLEUM FLOORING SHALL BE INSTALLED OVER EXISTING VCT. EXISTING FLOORING MUST BE STRIPPED OF ALL FINISH AND RESIDUE. PROVIDE SKIM COAT AS PER MANUFACTURERS RECOMMENDATIONS AND MEET ALL CURRENT ASTM STANDARDS. FORBO LINOLEUM MUST BE INSTALLED BY A CERTIFIED INSTALLER WITH CURRENT CREDENTIALS.

FINISH SCHEDULE:

LEGEND:	DESCRIPTION:	MANUFACTURER:	STYLE	MODEL	COLOR	REMARKS
PL1	PLASTIC LAMINATE	WILSONART	SOFT GRAIN	7971K-12	UPTOWN WALNUT	VERTICAL GRAIN
SS1	SOLID SURFACE	SILESTONE	QUARTZ	3 CM	CALYPSO	EASED EDGE
RB1	BASE AT WALL	ROPPE	700 TYPE TP	114	LUNAR DUST	
RB1	BASE AT WALL	ROPPE	700 TYPE TP	114	LUNAR DUST	
F1	LINOLEUM SHEET	FORBO	REAL	3146	SERENE GREY	
F2	CARPET TILE	MANNINGTON	SPAN	13219	DISTRICT	
F3	ENTRY MAT	MANNINGTON	TAKE BACK	1419	CONVERT	
WC1	PANEL FABRIC	MDC	PHOENIX	MPT3002	OYSTER	

A1 **NEW PLAN**
1/4"=1'-0"

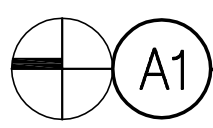


LIGHTING SCHEDULE:

	LIGHT FIXTURE LEGEND:	MOUNTING TYPE	MANUFACTURER:	TYPE:	COLOR:	COMMENT:
A		PENDANT LIGHT FIXTURE	TECH LIGHTING	ECHO GRANDE / TD - LED	CLEAR	16" OVERALL HEIGHT
B		RECESS LIGHT FIXTURE	HALO	PD6 - 20 - ED010 PDM6A - 835 - 61V - SCBA	--	--
C		SURFACE MOUNTED LIGHT FIXTURE	NULITE	RR4 - 03 - L35 - UNV - D 1C - FR - F - SCBA - X	--	COMBINE AND ORDER LENGTHS TO BEST SUITE LAYOUT SHOWN ON SHEET A100

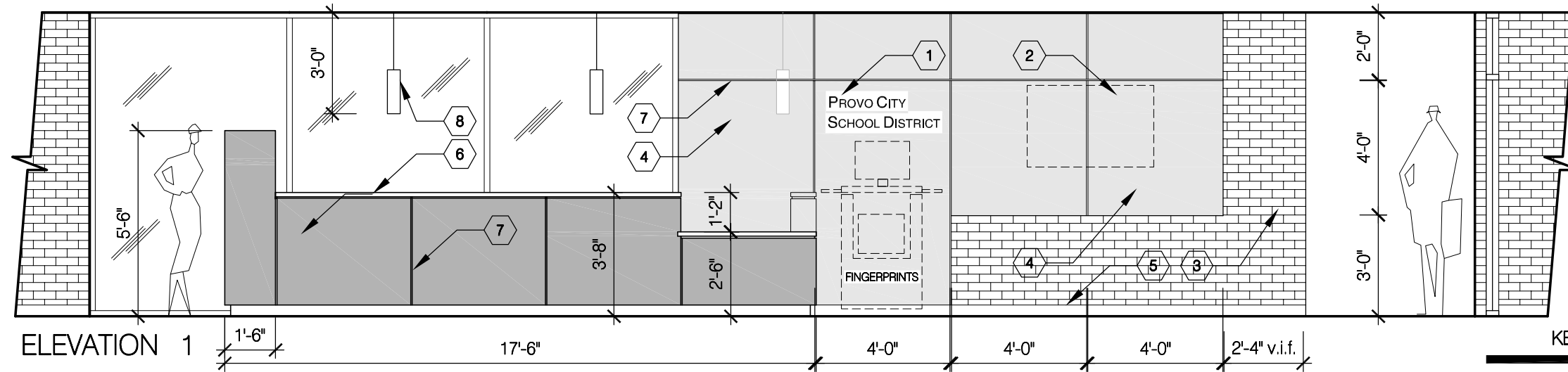
GENERAL NOTES:

- A. NEW LIGHT FIXTURE LOCATIONS ARE APPROXIMATE RE-POSING FIXTURE IN FIELD IF OBSTRUCTION IS ENCOUNTERED VERIFY NEW LOCATION WITH ARCHITECT
- B. TIE LIGHTS TO THE EXISTING CIRCUIT IN THE AREA TIE NEW CIRCUIT AS SHOWN



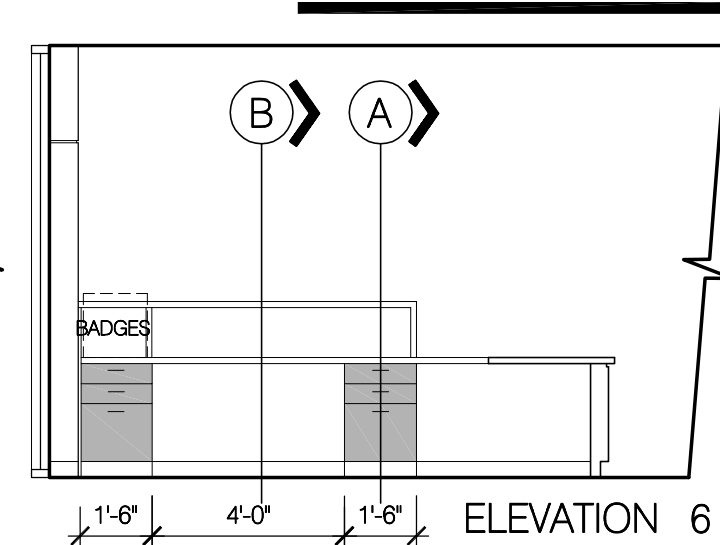
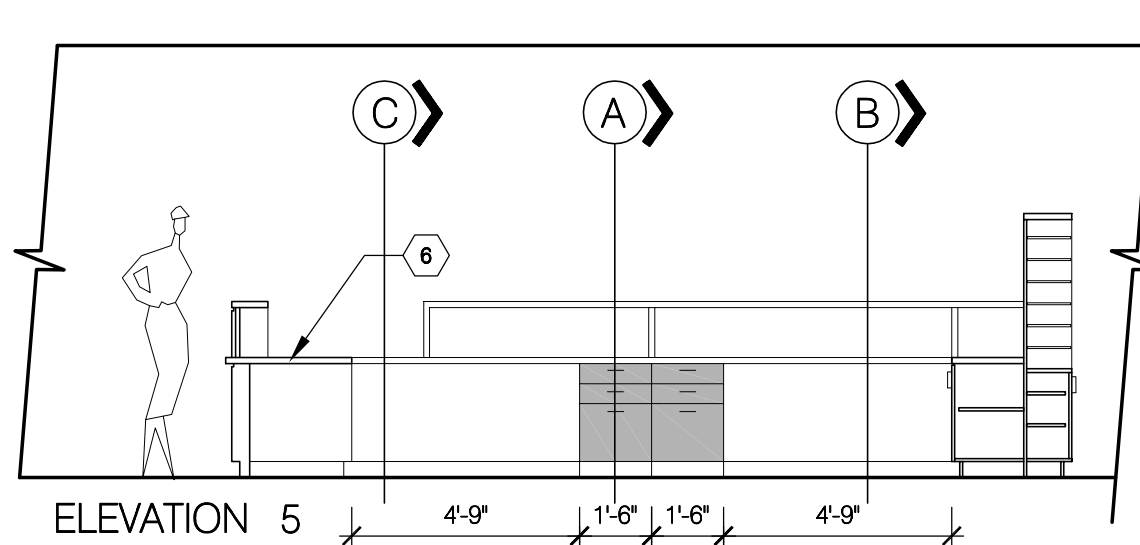
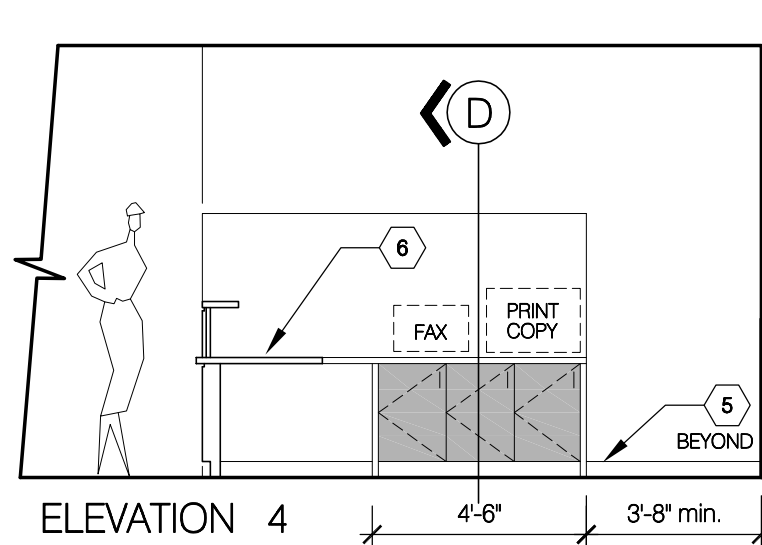
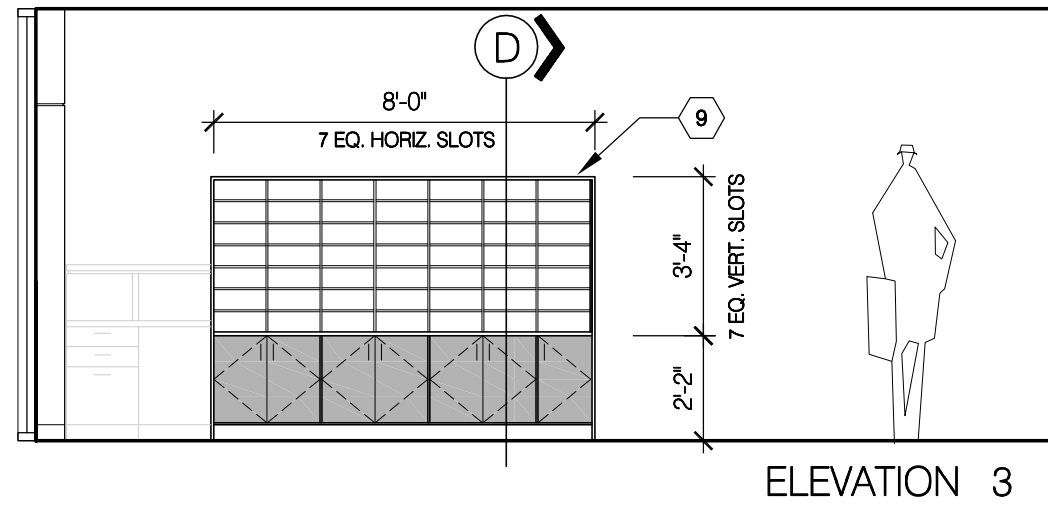
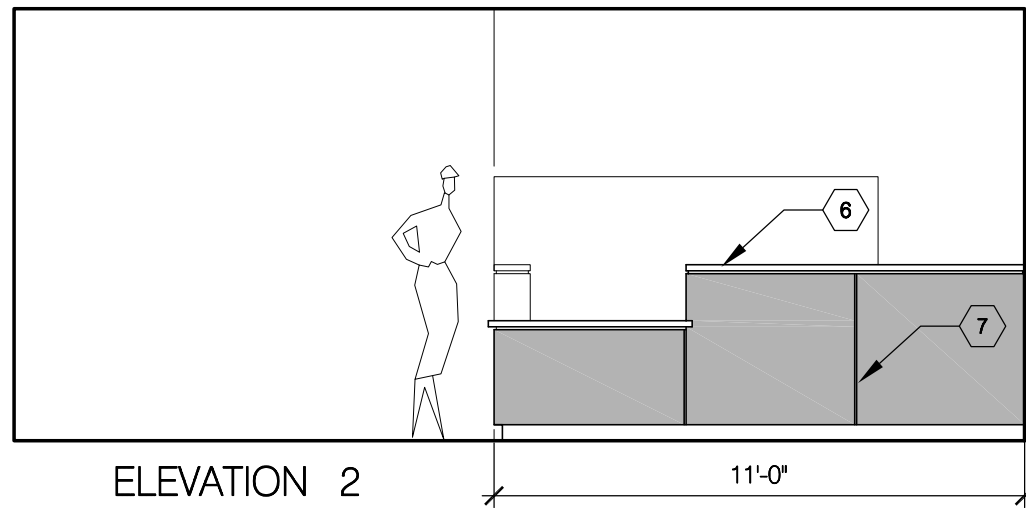
REFLECTED CEILING PLAN

1/4"=1'-0"



KEY NOTES:

- 1 1" RAISED 4" TALL ALUMINUM SIGNAGE ADHERED TO THE WALL PANELING
- 2 NEW LOCATION OF THE EXISTING FLAT SCREEN PROVIDE DATA AND POWER
- 3 EXISTING BRICK WALL / PATCH-UP WHERE NEEDED
- 4 WALL PANELS: PLASTIC LAMINATE FACES FIBER BOARD (MIN. 1/2" THICK)
- 5 SCHEDULED WALL BASE
- 6 NEW COUNTER / MILLWORK
- 7 REVEAL AT MILLWORK & WOOD PANELING / ALUMINUM CHANNEL 3/4" WIDE X 3/4" DEEP / DARK BRONZE COLOR
- 8 PENDANT LIGHT FIXTURE
- 9 MAILBOX CABINET



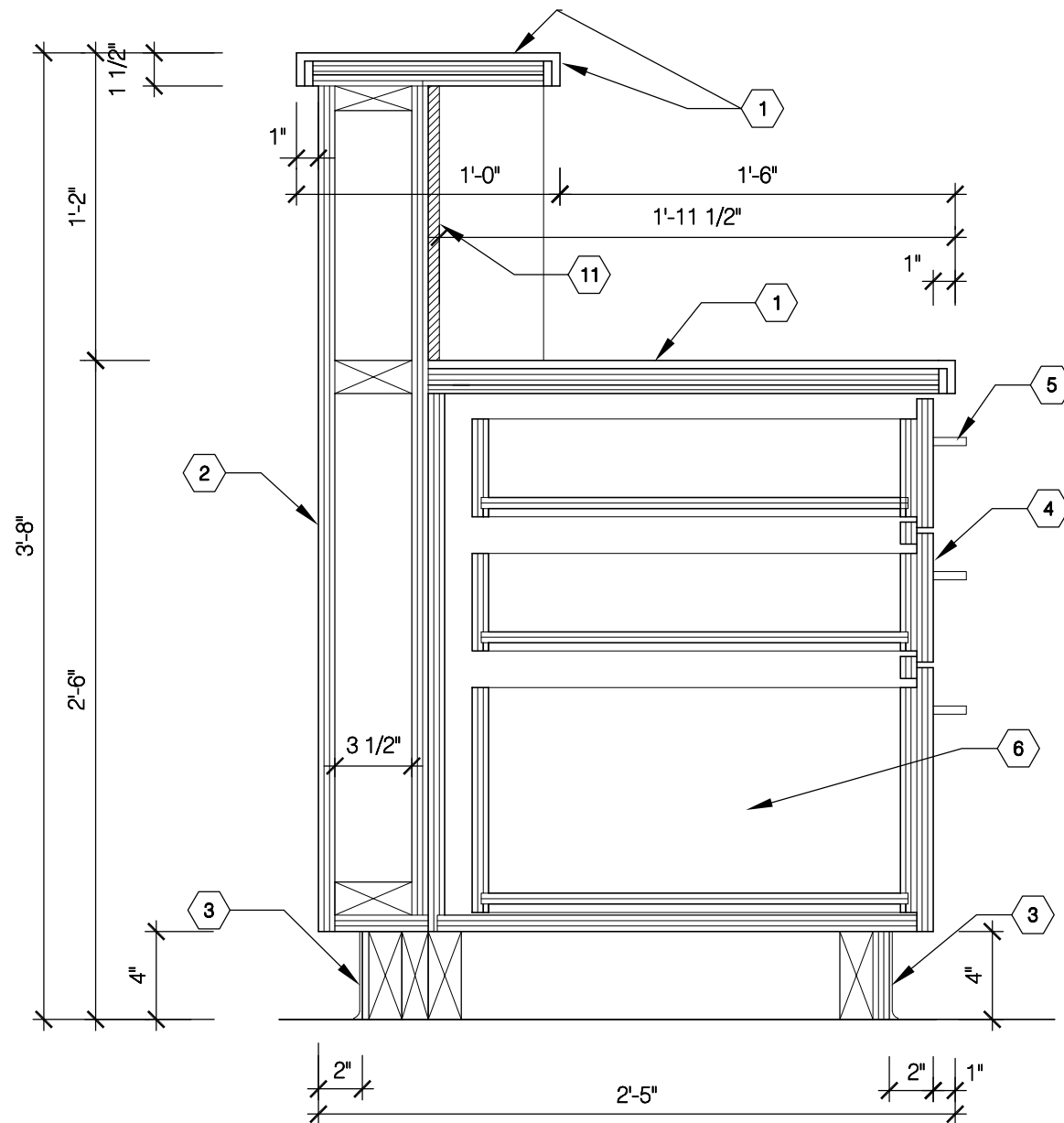
A1 MILLWORK ELEVATIONS
 1/4" = 1'-0"

KEY NOTES:

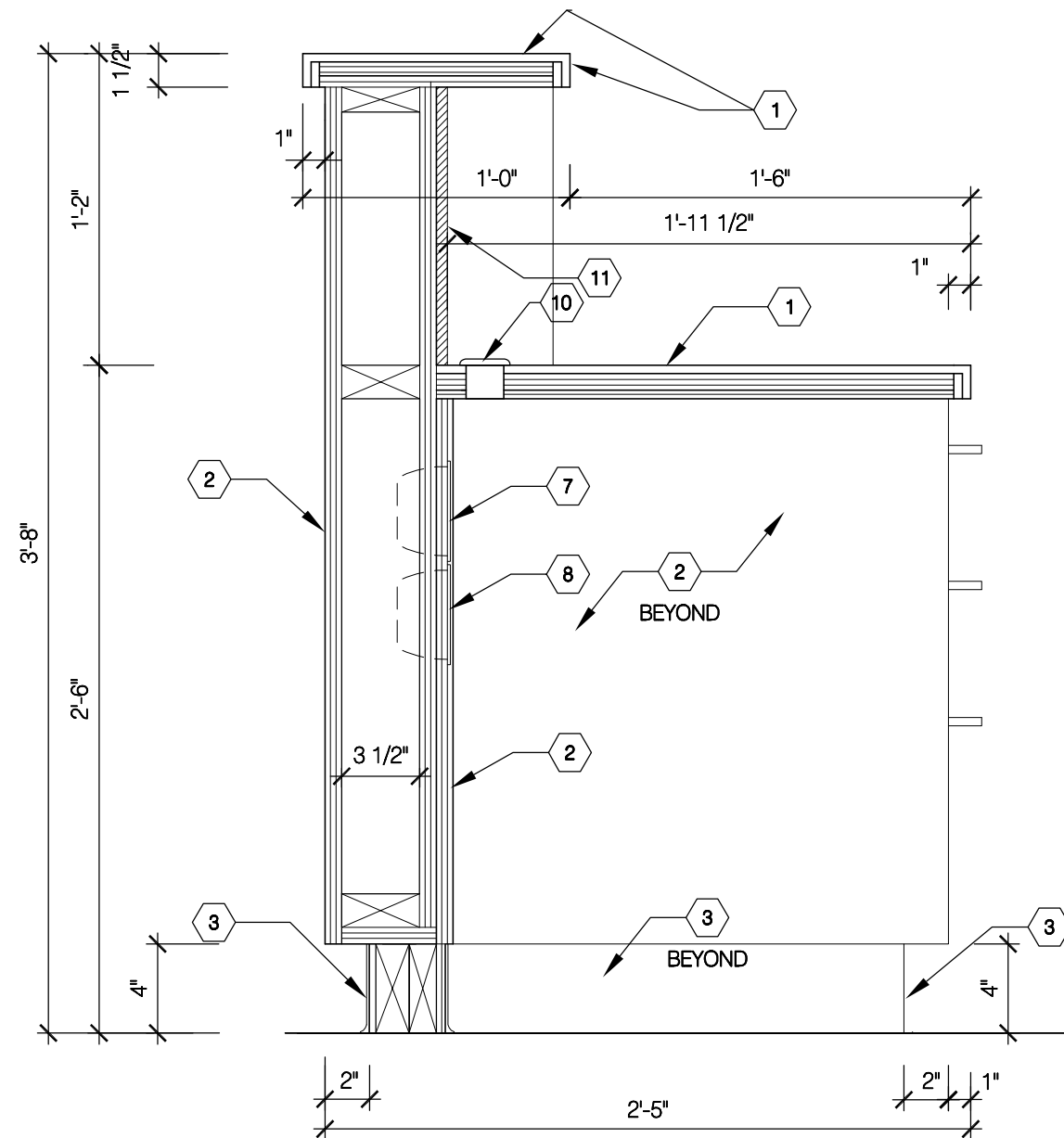
- | | |
|---|---|
| 1 SOLID SURFACE COUNTERTOP OVER PLYWOOD SUBSTRATE | 7 POWER AND DATA OUTLET AT LEAST ONE OF EACH PER WORK STATION |
| 2 PLASTIC LAMINATE OVER 3/4" PLYWOOD | 8 POWER OUTLET FOR GENERAL USE |
| 3 SCHEDULED BASE | 9 ADJUSTABLE SHELF / PLASTIC LAM |
| 4 PLASTIC LAMINATE / DOOR OR DRAWER | 10 GROMMET HOLE |
| 5 PULL / HARDWARE | 11 HOMASOTE BOARD W/ MDS TEXTILE SEE: FINISH SCHEDULE ON SHEET A102 (WC1) |
| 6 INTERIOR MILLWORK / WHITE MELAMINE | 12 ADJUSTABLE SHELF / MELAMINE |

GENERAL NOTES:

- A. USE CONCEALED HINGES AND 5" DOOR AND DRAWER PULLS W/ BRUSHED NICKEL FINISH
- B. INSTALL ADDITIONAL POWER OUTLETS FOR GENERAL USE
INSTALL ADDITIONAL POWER OUTLETS FOR GENERAL USE
- C. PROVIDE AT LEAST ONE GROMMET HOLE PER WORK STATION
COORDINATE LOCATION WITH DATA / POWER OUTLETS
- C. PROVIDE AT LEAST ONE POWER AND ONE DATA OUTLET FOR COPY/PRINT, FAX, BADGES AND FINGERPRINTING EQUIPMENT



A MILLWORK SECTION
1 1/2"=1'-0"



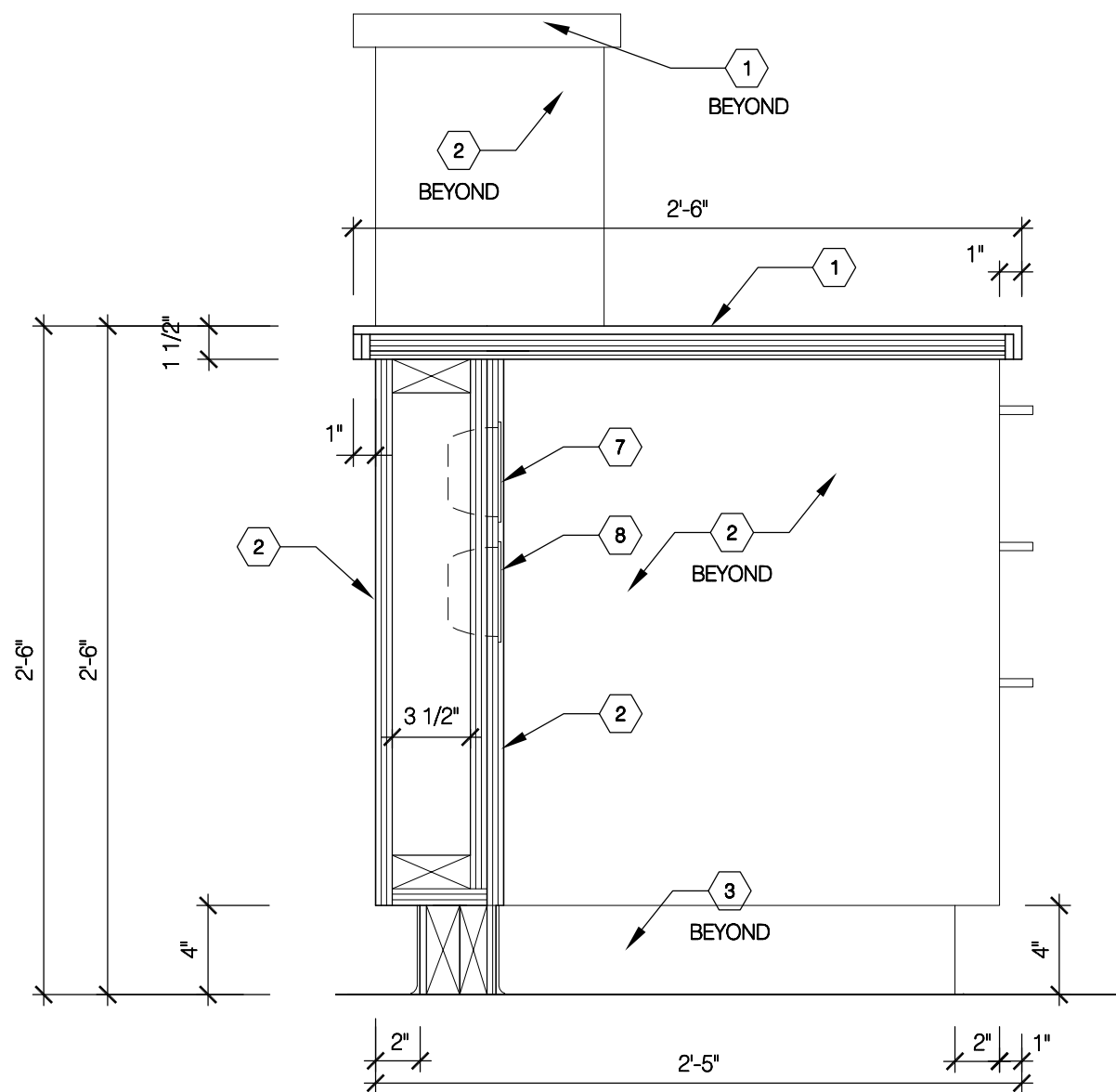
B MILLWORK SECTION
1 1/2"=1'-0"

KEY NOTES:

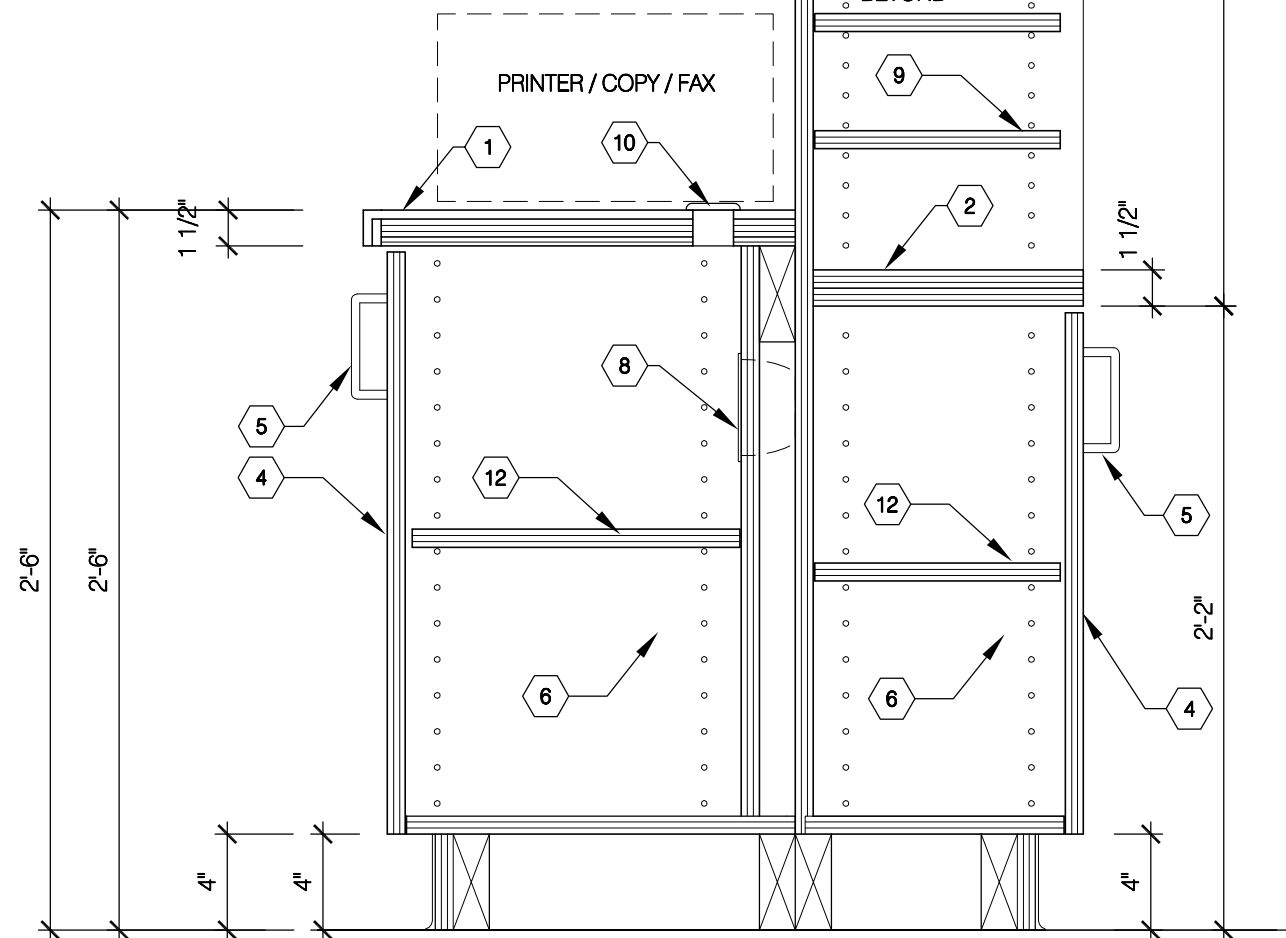
- | | |
|---|---|
| 1 SOLID SURFACE COUNTERTOP OVER PLYWOOD SUBSTRATE | 7 POWER AND DATA OUTLET AT LEAST ONE OF EACH PER WORK STATION |
| 2 PLASTIC LAMINATE OVER 3/4" PLYWOOD | 8 POWER OUTLET FOR GENERAL USE |
| 3 SCHEDULED BASE | 9 ADJUSTABLE SHELF / PLASTIC LAM |
| 4 PLASTIC LAMINATE / DOOR OR DRAWER | 10 GROMMET HOLE |
| 5 PULL / HARDWARE | 11 HOMASOTE BOARD W/ MDS TEXTILE SEE: FINISH SCHEDULE ON SHEET A102 (WC1) |
| 6 INTERIOR MILLWORK / WHITE MELAMINE | 12 ADJUSTABLE SHELF / MELAMINE |

GENERAL NOTES:

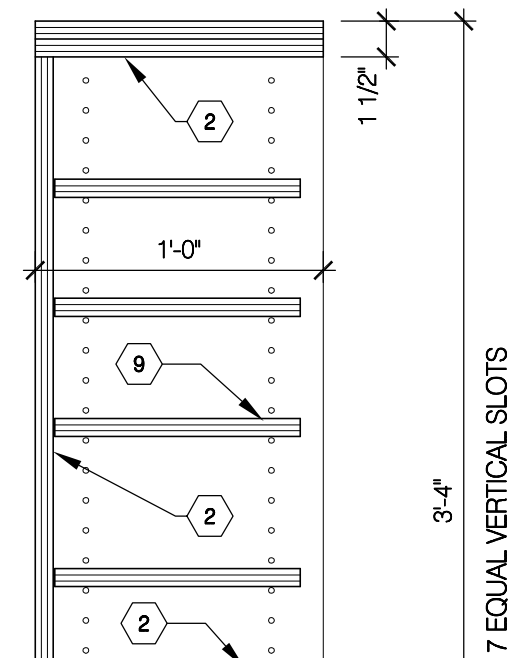
- A. USE CONCEALED HINGES AND 5" DOOR AND DRAWER PULLS W/ BRUSHED NICKEL FINISH
- B. INSTALL ADDITIONAL POWER OUTLETS FOR GENERAL USE
INSTALL ADDITIONAL POWER OUTLETS FOR GENERAL USE
- C. PROVIDE AT LEAST ONE GROMMET HOLE PER WORK STATION
COORDINATE LOCATION WITH DATA / POWER OUTLETS
- C. PROVIDE AT LEAST ONE POWER AND ONE DATA OUTLET FOR COPY/PRINT, FAX, BADGES AND FINGERPRINTING EQUIPMENT



C MILLWORK SECTION
1 1/2"=1'-0"



D MILLWORK SECTION
1 1/2"=1'-0"



7 EQUAL VERTICAL SLOTS